

Gove Futures

December 2025 Community Update Gove Peninsula Surf Life Saving Club

'Moving forward together'



**NORTHERN
LAND COUNCIL**
Our Land, Our Sea, Our Life



Australian Government
National Indigenous
Australians Agency



Australian Government
Department of Infrastructure,
Transport, Regional Development,
Communications and the Arts

RioTinto



**NORTHERN
TERRITORY
GOVERNMENT**



DEVELOPING
EAST ARNHEM

Agenda

- 1 Welcome to Country**
- 2 Traditional Owner Vision**
- 3 GPFRG Governance**
- 4 Update from the Northern Territory Government**
- 5 Update from Rio Tinto Gove**
- 6 Update from Rirratjingu Aboriginal Corporation**
- 7 Update from Gumatj Aboriginal Corporation**
- 8 Update from Northern Land Council**
- 9 Update from National Indigenous Australians Agency**
- 10 Update from Developing East Arnhem Limited**
- 11 Q & A**



A new journey together

Traditional Owners' Vision
for the Future of Nhulunbuy
and the Gove Peninsula

Gove Peninsula
Futures Reference Group

Traditional Owners' Vision

The Vision provides the foundations for Yolngu landowners, residents, businesses and industry to work together to achieve a positive post-mining future for the region

Planning for the Future

The Reference Group was formed in 2019 as a robust and collaborative approach to decision making in order to transition away from mining successfully



**NORTHERN
LAND COUNCIL**
Our Land, Our Sea, Our Life



Australian Government
**National Indigenous
Australians Agency**



Australian Government
**Department of Infrastructure,
Transport, Regional Development,
Communications and the Arts**

RioTinto



**NORTHERN
TERRITORY
GOVERNMENT**



**DEVELOPING
EAST ARNHEM**

Gove Peninsula Futures Reference Group

**Yolŋu and
Däpaki Together**

**Land
Tenure**

**Economic
Development &
Transition**

**Essential
Services &
Infrastructure**

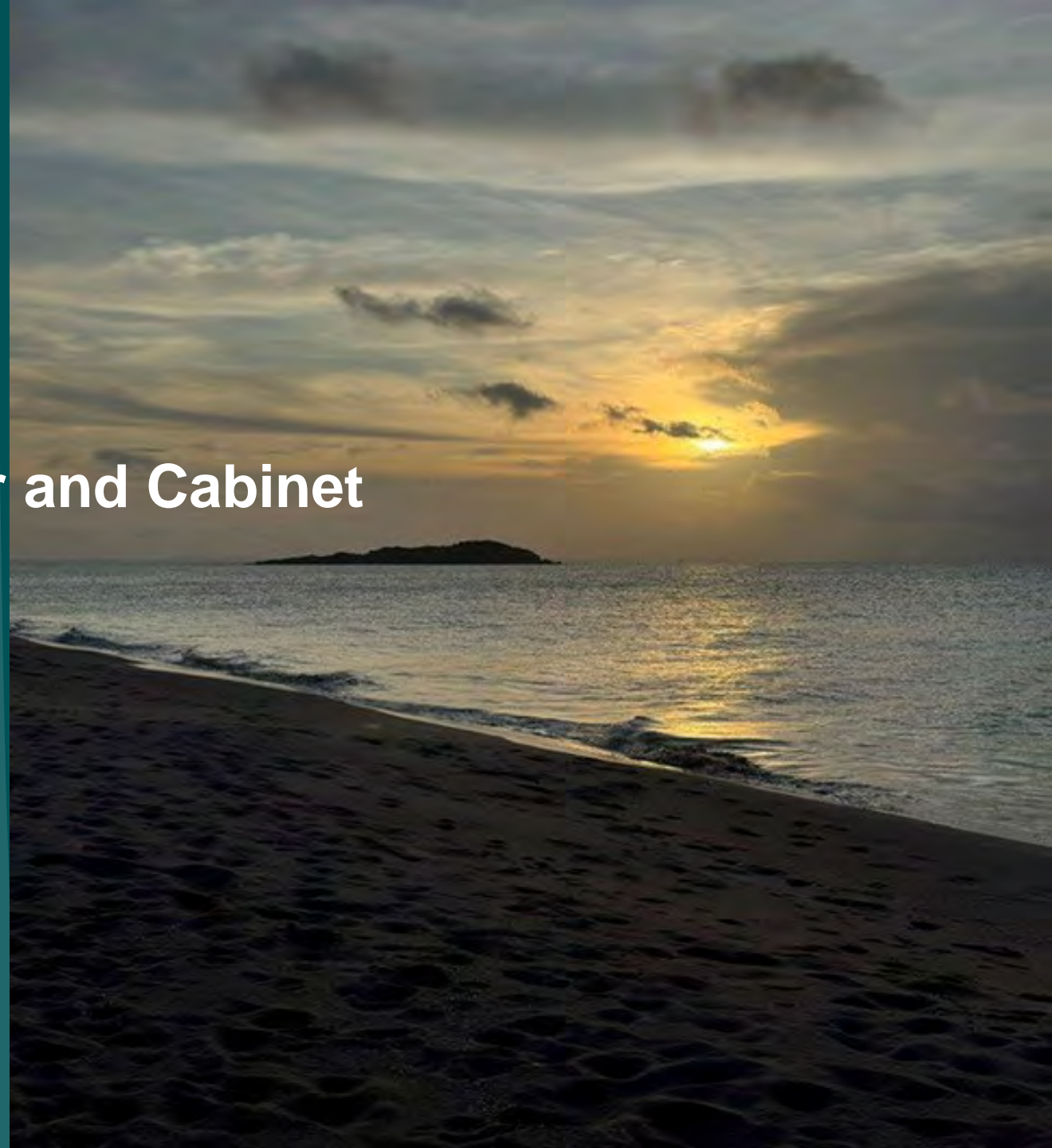
**Community &
Government
Services**

**Town
Governance**

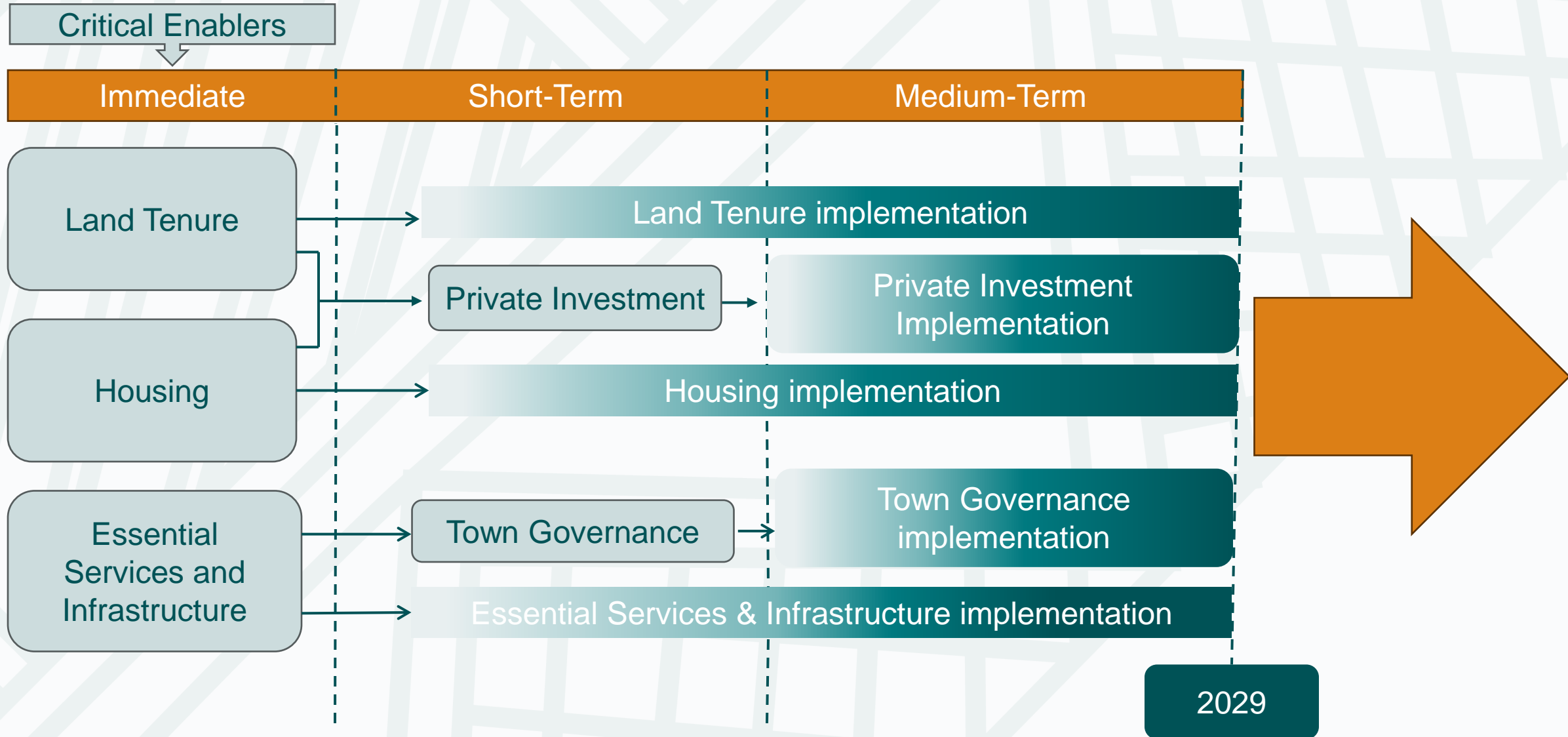
An update from the Northern Territory Government

Department of the Chief Minister and Cabinet

Margaret Close
Acting Deputy Chief Executive Officer
Policy, Reform and Regions



Upcoming Gove Transition process



Nhulunbuy Masterplan

A masterplan to rejuvenate Nhulunbuy

Master plan engagement and directions

- Nearly 200 people were involved in the Master planning process via surveys, site visits and workshops
- Engagement revealed both the assets and challenges for Nhulunbuy
- Cultural Centre and Gateway
- Regional Services Hub
- Great Place to live



11

Traditional Owners & Representatives



31

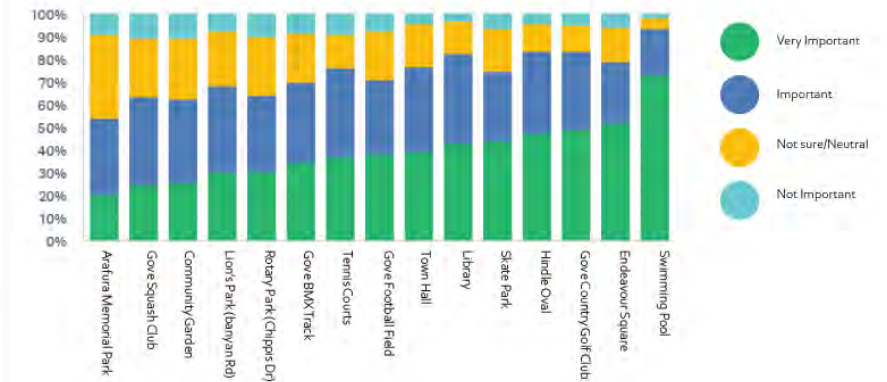
Key Stakeholders



156

Community Members

The importance of Nhulunbuy's community facilities and venues





Lively Town Centre

-  Pedestrian connections
-  Active edges
-  New Buildings
-  Refurbished buildings
-  Improved Town Square



Concept to redevelop Endeavour Square

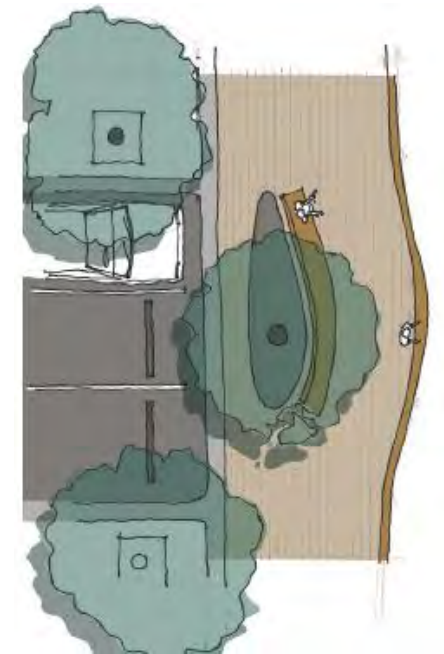


Concept for shaded pathway from Westral St to Town Beach

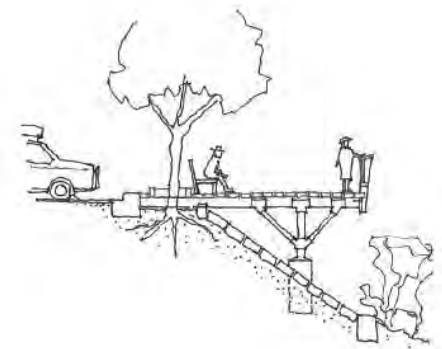


Beach Connections

- * New park
- 👁 Sea & beach views
- ➔ Pedestrian paths
- ▬▬▬▬ Board walk



Board walk concept plan



Board walk concept section



Green Open Space Network

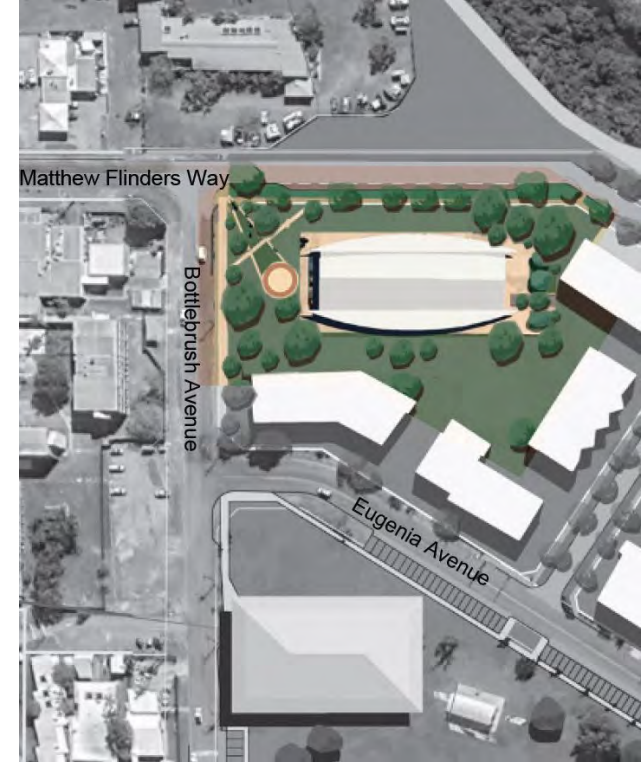
-  New green spaces
-  Key existing green spaces
-  Enhanced tree canopy
-  Green links



Safe Streets

- New/Enhanced Pedestrian Paths
- Large orange rectangle Large vehicles
- Orange square Car Parking
- Yellow bridge icon Upgraded crossing





Future Visitor Centre



Proposed Cyclone Shelter

Nhulunbuy Multipurpose Cyclone Shelter

Plans to safeguard Nhulunbuy against disaster risk and a new community asset

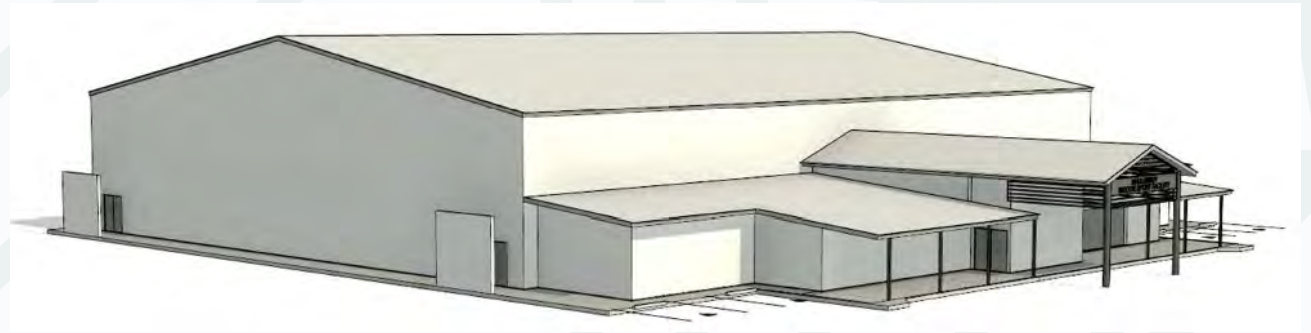
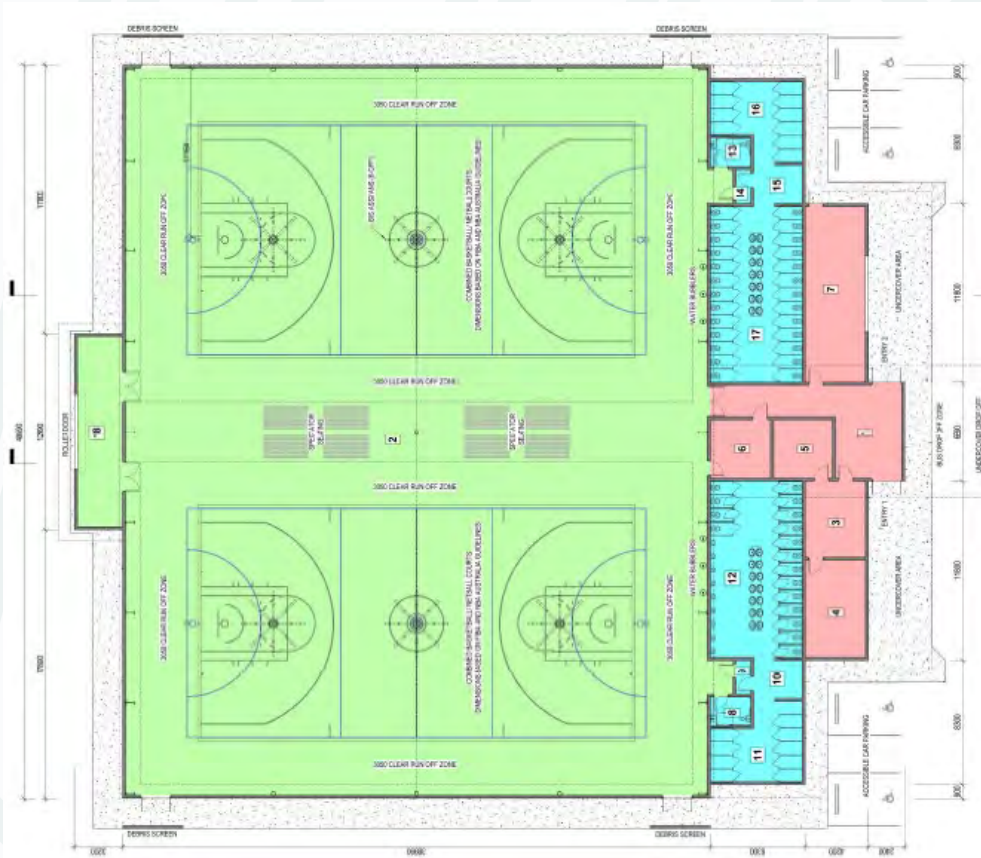
Project Update

- Funding from the Commonwealth and NT Government has been confirmed.
- Current stage: site investigations and technical mapping and feasibility underway.
- Construction due by end of 2027.



Final location to be confirmed

Nhulunbuy Multipurpose Cyclone Shelter



Project Update

- Concept includes a multi-purpose community space and possible youth centre
- Capacity for 1800 people

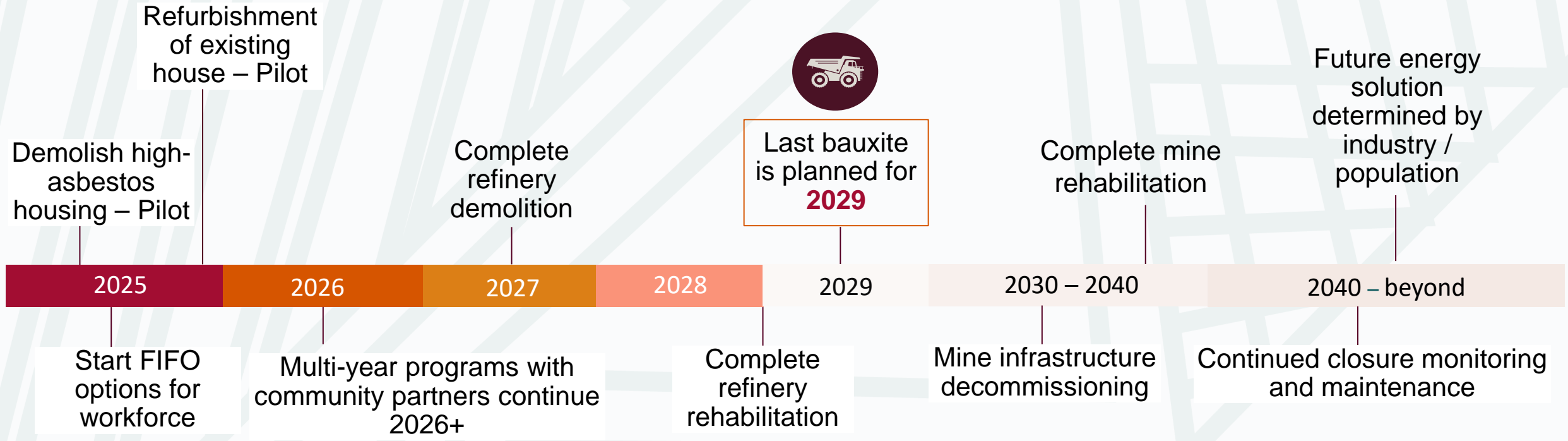


An update from Rio Tinto Gove

From Shannon Price
General Manager

Rio Tinto Gove – Journey to closure and beyond

3 solid years of production ahead



**Timeline subject to change as closure studies progress*

Communities

We're working with our partners and organisations to prepare for the changes ahead. In 2025 we've been:

- Working with CDU to identify Yolngu skilling opportunities post-mining
- Introducing a reduced rate for power and water for eligible clubs and not-for-profits
- Implementing a virtual work experience program, The Careers Department, in 6 schools and the Barawun Centre, showcasing post-mining career opportunities.



Improved communications in Yolngu Matha around closure



Implementation of The Careers Department into Gove Peninsula schools – including local virtual work experience opportunities

2025 local social investment has included:

- October Business Month
- Laynhapuy Homelands Aboriginal Corporation
- Nhulunbuy Motorcycle Club
- Nhulunbuy PAWS
- Gove Touch
- Gove Peninsula Tennis Club
- Nhulunbuy Community Garden
- Anglicare NT
- Nhulunbuy Op Shop
- Nhulunbuy Swimming Club
- Conquer the Corrugations
- Garma Festival
- Dhimurru Aboriginal Corporation
- Dhupuma Barker
- Multi-year agreement signed with Clontarf

Town Works

Asset upgrades

- Roadworks will continue in 2026.
- Major sewer refurbishment activities will commence in the dry season

Normalisation – Utilities charges

- Water and electricity charges mirror the Utilities Commission regulated rate and provide parity with other NT towns

Power

- Solar commissioned and contributing to grid
- Increased reliability of our power distribution network in town. There has been a year-on-year improvement of the electrical network.



Intersection Upgrades

Housing

Rio Tinto



Rirratjingu
Aboriginal
Corporation



Rio Tinto Gove Housing Update

- To support Rirratjingu Aboriginal Corporation's Town Strategy, endorsed by GPFRG, we are progressing with a pilot phase for demolition to deliver vacant lots.
- Around 10 houses will be removed by the end of 2025.
- Construction on some lots has already started.
- Discussions are underway around releasing existing houses.

Rirratjingu Housing Update

20 dwellings coming online in near term:

- **Bunggulwuy Close**
 - 11 dwellings
 - 22 bedrooms
- **Dargaville Close**
 - 8 dwellings
 - 22 bedrooms
- **34 Banyan Road**
 - First house back from Rio Tinto
 - 3 bedrooms



Demolished asbestos housing site



Rirratjingu Housing Development at Bunggulwuy Close

An update from Rirratjingu Aboriginal Corporation

From Paul Martin
Chief Operating Officer



**Rirratjingu
Aboriginal
Corporation**

Strategic Priority 1

PROVIDE LEADERSHIP FOR THE REGION, LEADING INTO AND POST MINING

As the recognised Traditional Owners of Nhulunbuy, Yirrkala, and surrounding lands on the Gove Peninsula, the Rirratjingu Aboriginal Corporation steps forward as a stabilising force and future-focused regional leader through the mining transition and beyond.

Strategic Priority 2

RECLAIM THE PUBLIC PROFILE AND INFLUENCE OF RIRRATJINGU

Rirratjingu will position itself as a respected and authoritative voice in East Arnhem by implementing a strategic branding, media, and public engagement campaign. This approach will showcase our historic legacy, cultural authority, and future vision, ensuring Rirratjingu's role is clearly understood and acknowledged by government, industry, and the Australian public.

Strategic Priority 3

SECURE AND SHAPE LAND TENURE ACROSS YIRRKALA AND NHULUNBUY

We will exercise Rirratjingu's Traditional Owner authority by formalising land tenure arrangements over Yirrkala, Nhulunbuy, and surrounding country, ensuring that land is held, used, and managed in ways that align with cultural values, community priorities, and long-term economic opportunities.

Strategic Priority 4

DEMAND TRANSPARENCY AND TAKE LEADERSHIP IN THE GOVE PENINSULA MINE TRANSITION

Rirratjingu Aboriginal Corporation will take decisive leadership in the Gove Peninsula mine closure and transition process, ensuring full transparency, Traditional Owner inclusion, and public accountability so that the economic, social, and land tenure future of the region is shaped by Rirratjingu priorities, not corporate convenience.

Strategic Priority 5

RETAIN AND ELEVATE OUTSTANDING GOVERNANCE

We will build on Rirratjingu's strong foundations of governance by embedding best practice systems, enhancing transparency measures, and deepening community trust — ensuring Rirratjingu Aboriginal Corporation remains a national leader in Indigenous corporate governance.



2025 - 2030

Strategic Plan

Shaping Tomorrow, Together.

Strategic Priority 6

BUILD WEALTH THROUGH COMMERCIAL OPPORTUNITIES & INVESTMENTS

We will secure the long-term economic independence of the Rirratjingu people by growing a diversified base of commercial activities and strategic investments that will sustain our community long after mining ends.

Strategic Priority 7

BUILD A HIGH-PERFORMING AND PROFESSIONAL ORGANISATION

We will continue to position the Rirratjingu Aboriginal Corporation as a respected, high-performing organisation by embedding professional standards, modern systems, and a strong internal culture across every level of the Corporation.

Strategic Priority 8

DELIVER SERVICES THAT SUPPORT RIRRATJINGU FAMILIES, STRENGTHEN COMMUNITY AND EMPOWER MEMBERS

We are committed to delivering high-quality, culturally grounded services through our Community Services division that support Rirratjingu families, empowers our members, and strengthens the social fabric of our community.

Strategic Priority 9

CULTURAL FOUNDATION – CULTURAL GOVERNANCE (RIRRATJINGU NUKU ROM)

We will embed Rirratjingu Nuku Rom, our cultural law and governance, into all decision-making, leadership, and operations of our corporation, ensuring our future is grounded in the cultural strength of our traditions, identity, and ancestral authority.

Strategic Priority 10

INVESTING IN OUR PEOPLE THROUGH EDUCATION, EMPLOYMENT, LEADERSHIP & EQUAL OPPORTUNITY

We will build a strong and self-sufficient Rirratjingu future by investing in education, meaningful employment pathways, and the development of confident, capable leaders. Our strength lies in our people. As we move into a post-mining era, it is essential that our members, especially our young people, are equipped to lead, work, and thrive.

Commercial Opportunities

- Bakery Shed – potential for offices/training facilities
- Car wash facility – feasibility in progress
- RAC Infrastructure Fund – starting with \$8M
- Dedicated Tourism Development Officer



**Rirratjingu
Aboriginal
Corporation**

Business Development



- Quarry – demand from Rio has reduced but many more opportunities are ahead
- Enterprises – finishing up the Pond 5 work and have recently started the Pond 6 South rehabilitation works
- RPM – secured the internal roads contract from RT and are managing the residential construction projects



**Rirratjingu
Aboriginal
Corporation**

Land Tenure

We are talking to NLC, the Office of Township Leasing and others to ascertain the best way forward.

Some sort of 99-year lease looks like a possibility, although the underlying governance structure not yet been considered deeply.

Traditional owners are committed to providing existing leaseholders with as much ongoing security as possible. We are working on integrating this position into the broader land tenure negotiations.



**Rirratjingu
Aboriginal
Corporation**

An update from Gumatj Corporation

Klaus Helms
Chief Executive Officer



Gumatj Group – Current Activities

Building commercial success

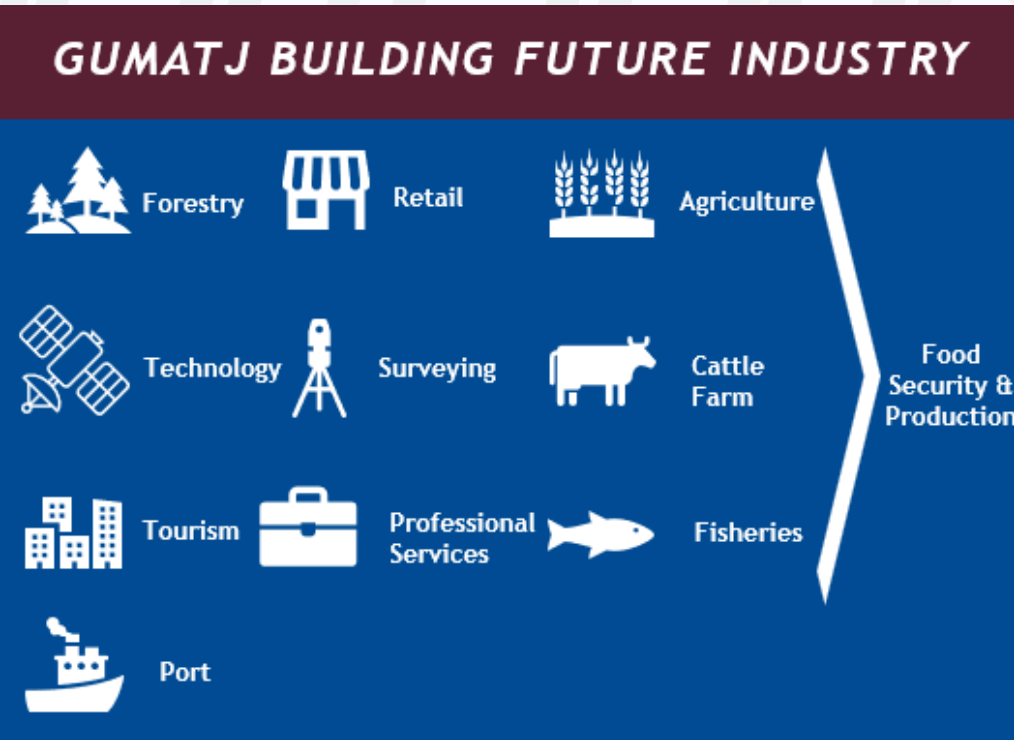
Internal – Building a stronger community



CIVIL	CONSTRUCTION	MINING	EMERGING
Civil Works	Construction	Bauxite Mining	Retail
Transportation	Plumbing	Quarry	Agriculture
Batch Plant	Electrical	Nursery & Rehabilitation	Forestry
Waste Management	Fabrication		

YOUTH, EDUCATION, CULTURE & JUSTICE		
Youth Services	Thrive Education Program	School Nutrition Program
WORKFORCE DEVELOPMENT & SOCIAL ENTERPRISE		
Community Store & Cafe	Mechanical Workshop	Landscaping & Native Nursery
SAFE & HEALTHY HOMES		
Repairs & Maintenance	Living Strong Program	Tenancy Management
COMMUNITY WELLBEING, CONNECTION & STRENGTH		
Community Case Management	Community Consultation	Growing Community Led Programs

Gumatj Group – Future Opportunities



(Disclaimer: The industries listed here are possibilities; however, are solely dependent on Land Tenure decisions. For any questions relating to these slides, please contact the Gove Peninsula Futures Reference Group)

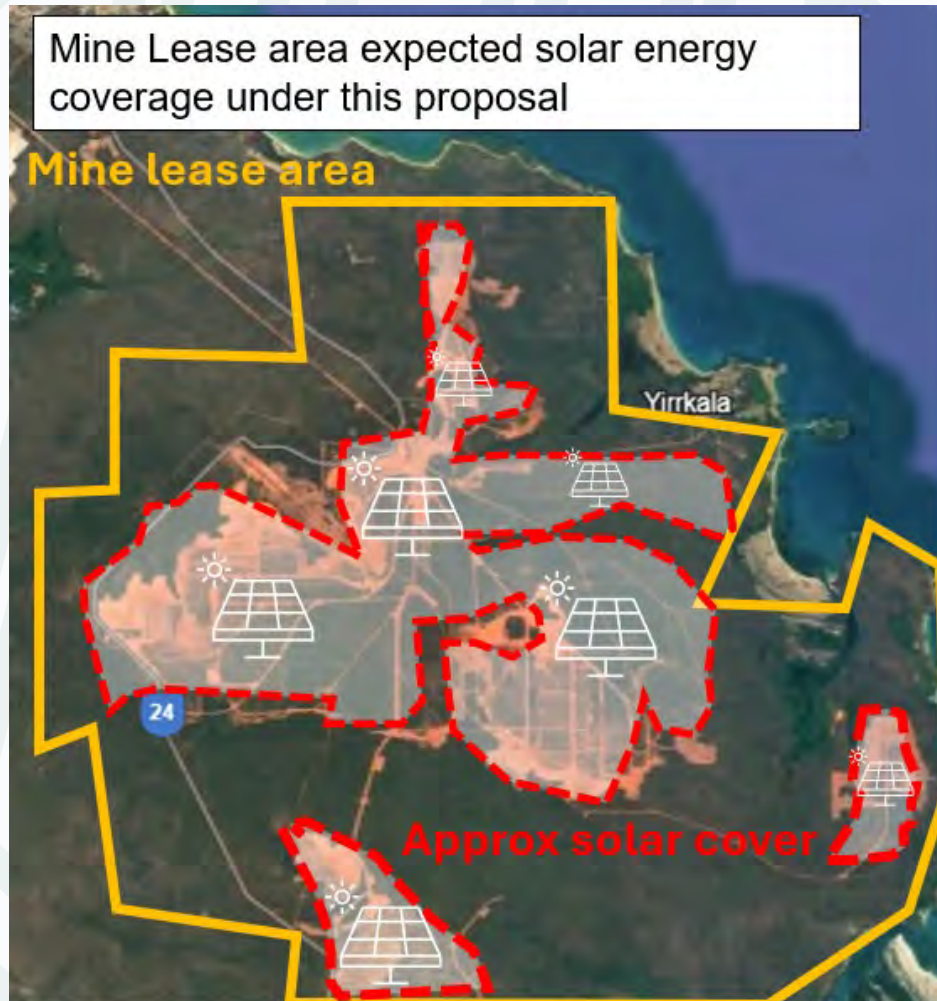
Renewable Fuels Proposal

- Established Consortium - An international company with top tier banking, technical & off take partners wants to build a refinery in Gove.
- Strong and growing demand for biofuel products.
- Benefits. Large investment and ongoing employment. Treating bio-waste from SE Asia to produce biofuel products (diesel, jet fuel and LPG).
- Timeline aspirations. Finalise planning, design & financing Q2 2027 and start construction Q3 2027.



(Disclaimer: The industries listed here are possibilities; however, are solely dependent on Land Tenure decisions.
For any questions relating to these slides, please contact the Gove Peninsula Futures Reference Group)

Ammonia Production Proposal



- Established Team –experienced Ammonia developer & operator, with appointed technical team & advisers.
- Benefits. Very large capital spend on solar, electrolysers, ammonia facility and hydrogen pipeline. Ongoing employment and carbon reduction.
- Strong and growing demand for ammonia products including fertiliser and industry and fuel for power generation and transport..
- Timeline aspirations. Financial close & start construction first half of 2027.

(Disclaimer: The industries listed here are possibilities; however, are solely dependent on Land Tenure decisions. For any questions relating to these slides, please contact the Gove Peninsula Futures Reference Group)

Space – Using Gove as a Launch Site



- Strong interest – in resuming orbital rocket fabrication and launch operations.
- Benefits to users. The 2022 launches illustrated the benefits to potential operators and to the regional economy.
- Ongoing discussions continue with potential users interested in gaining approvals and developing the infrastructure needed for further operations.

(Disclaimer: The industries listed here are possibilities; however, are solely dependent on Land Tenure decisions. For any questions relating to these slides, please contact the Gove Peninsula Futures Reference Group)

Exploration



- Gulkula Mining has exploration licences for potential mineral deposits outside current mining leases.
- It is investigating the potential of these EL's for mineral extraction.
- This requires working with the Northern Land Council as part of the process to potentially secure licences to mine these areas.

(Disclaimer: The industries listed here are possibilities; however, are solely dependent on Land Tenure decisions. For any questions relating to these slides, please contact the Gove Peninsula Futures Reference Group)

Responding to Mining Closure

Strengthening our operations



Actions through transition

- Building the resources & capabilities to navigate mining closure.
- Support services & the wider economy of the region.

Pursuing major projects

The barriers and risks for these projects are very significant. It is difficult to see how these barriers & risks can be managed in line with proponents' aspirations.



Barriers to major projects

- Gaining Traditional Owners' acceptance and potentially involving the land of multiple clans.
- Gaining access to land under Rio Tinto mining leases.
- Navigating government regulatory requirements.
- Securing project finance and, in some cases, government financial support.

Releasing land from the Minerals Title for use by other industries

Early Diversification of Land Project Milestones

- Confirmed a legally sound pathway for early diversification of land on SML11.
- Processes of land diversification and leasing conditions and are being developed into an Umbrella Agreement that annexes future Crown Lease and Section 19 Lease.
- Trialling this approach on a non-commercial site.

Umbrella Agreement annexes Crown Lease / S19 and permits use of surrendered land from SML11 for the purposes of industry diversification

Land transferred to proponent via Crown Lease ↓

Crown Lease land tenure arrangement enacted until SML11 expiration or surrender

↓ *Land transferred to proponent via S19 Lease*

Section 19 Lease enacted as new land tenure arrangement following SML11 expiration or surrender

Our Challenge Ahead

Mining Closure



An update from Northern Land Council

From Craig Bonney
Regional Manager
East Arnhem



Legend:



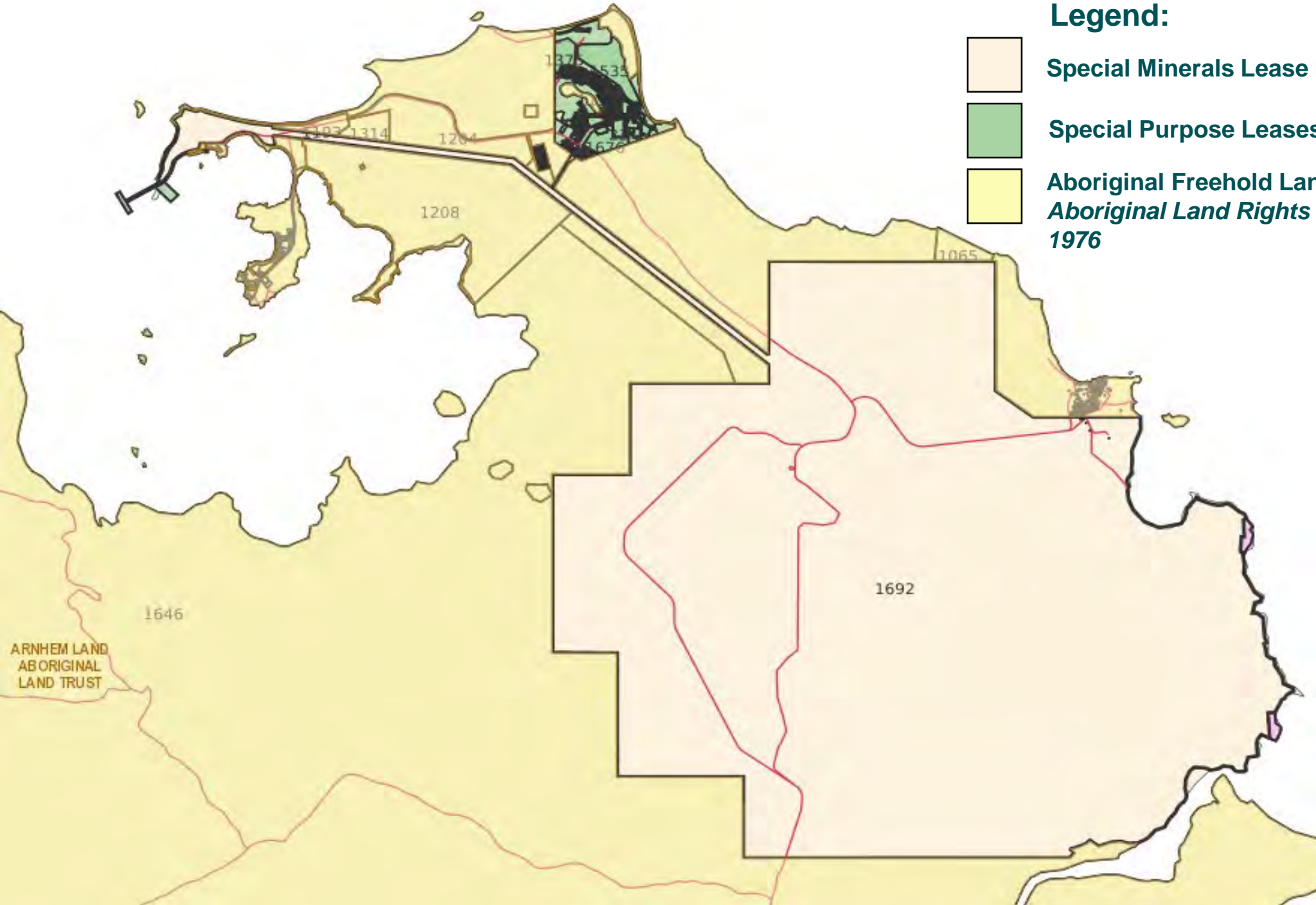
Special Minerals Lease held by Rio Tinto



Special Purpose Leases held by Rio Tinto



Aboriginal Freehold Land granted under the *Aboriginal Land Rights (Northern Territory) Act 1976*



Progress so far

- Formed an internal working group to guide and provide assistance to Traditional Owners
- Engaged the Closure, Aged and Legacy Mine (CALM) department to work with TO's and Relevant stakeholders
- Working with TO Corporations in relation to their decision around the future land tenure options
- We expect to consult more broadly with Traditional Owners in relation to this critical issue over the next 12 months



Progress so far

- Met with TO Corporations and Rio Tinto to assess and then consider next steps in relation to Environmental responsibilities
- Ensuring that we are properly resourced, especially from a legal perspective
- We are an enabler for S19 (Leases or Licenses) which are an important part of the economic transition of Nhulunbuy and the region more broadly



Central Arnhem Road Upgrade

- The Australian and Northern Territory Governments (NTG) have jointly committed \$355 million (\$280 million from the Australian Government and \$75 million from the NTG) over 10 years to upgrade priority sections of the Central Arnhem Road.
- It involves sealing, reconstructing, widening, and flood immunity improvements.



Consultations

- NLC has been running information sessions about the road upgrades.
- NLC has been talking to stakeholders in the Nhulunbuy and East Arnhem Region.
- NLC has the responsibility under the Land Rights Act to consult TO's and get consent for the road upgrades and consent to enter into a Mineral Extraction Agreement (MEA), for the use of gravel pits, camping and lay down areas, and water access. These consultations will begin over the next couple of months.
- NLC will also conduct Sacred Site clearances on behalf of AAPA.



Benefits

- Minimise damage to personal motor cars.
- Improved road safety and reduction in crashes.
- Reduction in travel time (Boggy Creek – Dhupuma Road specific – Heavy vehicles 1 hour, light vehicles 20 minutes).
- Reduction in closure times and restrictions.
- Increased access for emergency services, tourism, freight.
- Better access to health and education for communities/homelands.
- Provide greater tourism opportunities.
- Increased Indigenous employment opportunities.



An update from National Indigenous Australians Agency

(Commonwealth Government)

Gerrit Wanganeen
Regional Manager
Arnhem Land and Groote Eylandt
Central Group

Updates

- ✓ Regional Economic Development
 - Remote Australia Employment Service (RAES)
 - Remote Jobs and Economic Development (RJED)
- ✓ Significant local investments



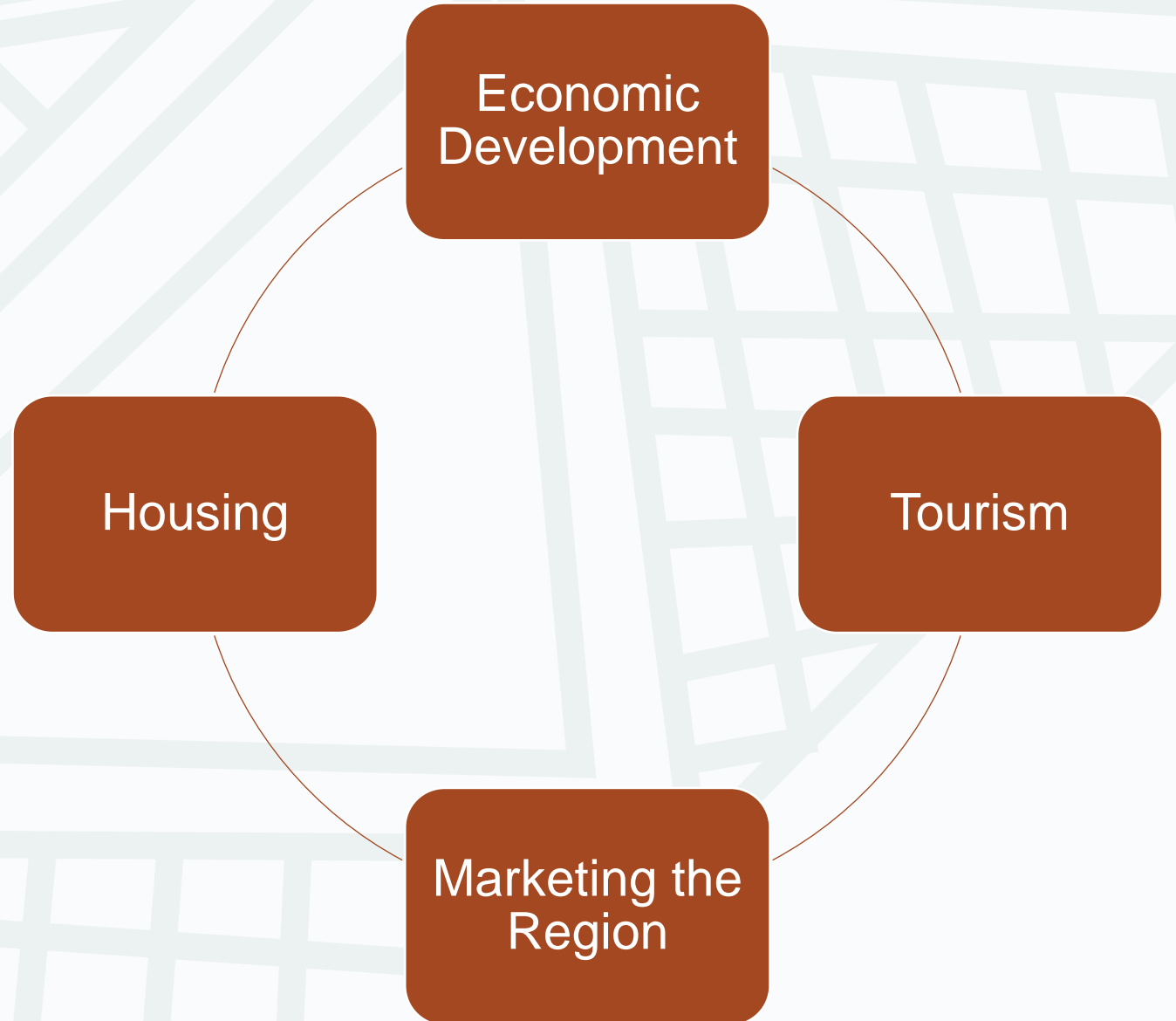
An update from Developing East Arnhem Limited

Luke Walker
Chief Executive Officer



DEVELOPING
EAST ARNHEM

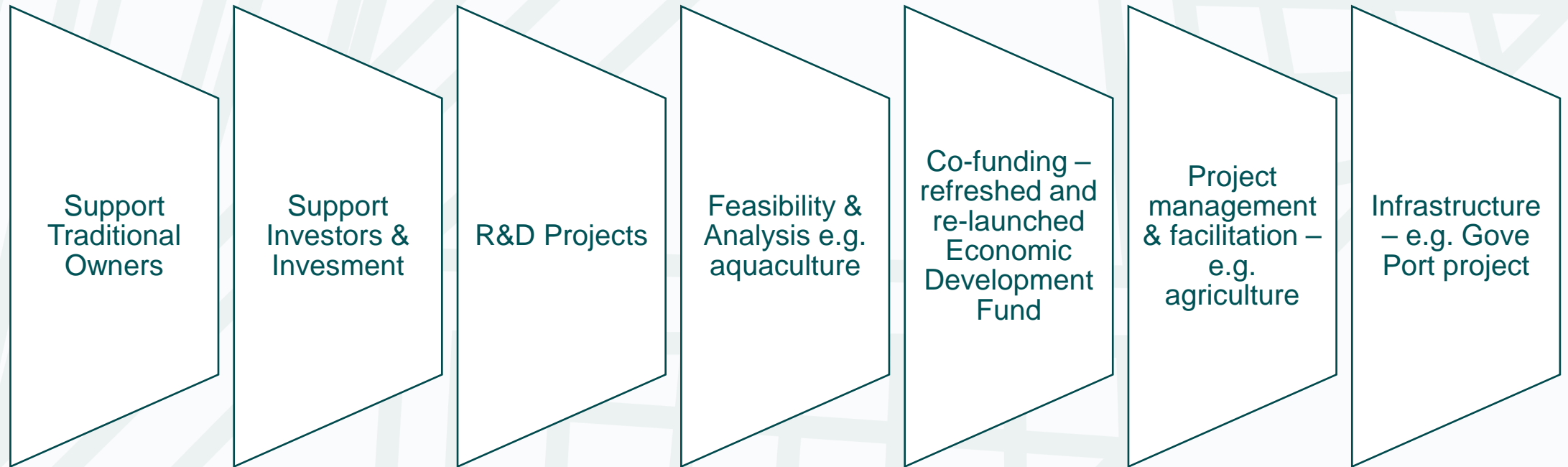
Four Functional Areas



Economic Development

DEAL facilitates investment and economic development opportunities between Yolŋu Traditional Owners, local organisations and businesses, governments and investors

Overview:



Tourism

DEAL is driving the development of a sustainable tourism industry, led by Yolŋu and in partnership with business and government

Current key projects:

Central Arnhem
Road Tourism
Package

Gove Peninsula
Tourism Master
Plan

Nhulunbuy Visitor
Information/Culture
Centre

Leading the
development of a
professional and
connected local
tourism sector

Visitor research
and engagement to
support data
collection and
insights

Marketing the Region

Awareness of where East Arnhem is...one of our biggest challenges...

Where is East Arnhem on a map? We asked everyday Australians this question and we got this result...



Marketing the Region

Building on the strategy development and stakeholder engagement, 2026 sees the launch of a new East Arnhem brand identity, regional website, logos, digital assets and paid digital media campaigns

Current key projects:

Implement first region-wide marketing strategy

Launch a new regional brand identity for East Arnhem, including a website that will assist investors, future residents and visitors in learning about our region and the opportunities here

New platforms for the regional brand (YouTube, TikTok, Facebook, Instagram)

Commence separate Invest/Live/Visit targeted social media, search and paid campaigns throughout 2026

BREAK

Q&A



Getting Information

The Reference Group invites attendees to visit Gove Futures website for further information or to submit any questions or feedback – govefutures.nt.gov.au

