

# Gove Futures

---

## COMMUNITY UPDATE

A joint community update from the Gove Peninsula  
Futures Reference Group

23 May 2023



NORTHERN  
LAND COUNCIL  
*Our Land, Our Sea, Our Life*



Australian Government  
National Indigenous  
Australians Agency



Australian Government  
Department of Infrastructure,  
Transport, Regional Development,  
Communications and the Arts

RioTinto



NORTHERN  
TERRITORY  
GOVERNMENT

# Agenda

- 1 Welcome**

---
- 2 Traditional Owners' Vision**

---
- 3 Reference Group Workstreams**

---
- 4 Work To Date**

---
- 5 Workstream Priorities 2022-23**

---



# Traditional Owners' Vision

The Gove Peninsula is one of the most special places in Australia.

Our vision is to rejuvenate the region. It will be a place for us to share our culture, and a business and services hub for all of Arnhem Land.

We will work together to create a stronger and more secure future for generations of Yolŋu and Njāpaki (non-Aboriginal people) to come.

Gove Peninsula-nydjā dhuwala dhapirrk wāŋa dhuwala Australia.

Njilimurrungunju nhānharanydjā njilimurru yurru sharing njilimurrunguwuy culture, business ga services dhiyala Arnhem Landjuru.

Marr njilimurru yurru djāma rrambanj njurikina bala yalalanjimirri wu Yolŋuwu ga Njāpakiwu.



# Traditional Owners' Vision

Recognition of Traditional Owners.

Dharanjan wäṅa-waṭanjunha malanha.

Yolṅu and Njäpaki together.

Yolṅu ga Njäpaki rrambanji.

Connecting with culture and country.

Rrambanjikuma bala wäṅalili, Romlili, ga Culturelili.

A diverse economy.

Yaka yurru djäma wanganygala miṭṭjiwala marr  
ṅilimurru yuru djäma rrambanji ga wiripu-wiripu  
djäma

Rejuvenating Nhulunbuy.

Djäma Nhulunbuyinha yuṭakuma.

Nhulunbuy as a services hub.

Nhulunṅura base yurru djingaryun  
yalalawu marr yurru gunga'yun Yolṅunha.

Infrastructure ready for the future.

Djäma Nhulunbuyinha latju ga  
ṅäthilmirriyama yalalawu marr yurru  
wäṅa djäma manymakkuma balanyara  
bitjan dhukkar, bäwa, houses, airport.

Town, communities and  
homelands strong together.

Nhulunbuy, Yirrkala, Gunyanjara ga  
Homeland yurru djäma rrambanji.

# Reference Group Workstreams

Gove Peninsula Futures Reference Group



```
graph TD; A[Gove Peninsula Futures Reference Group] --> B[Yolŋu and Däpaki Together (in 2023)]; A --> C[Land Tenure]; A --> D[Economic Development and Transition]; A --> E[Essential Services and Infrastructure]; A --> F[Community and Government services]; A --> G[Town Governance (in 2023)];
```

**Yolŋu and  
Däpaki  
Together**  
(in 2023)

**Land  
Tenure**

**Economic  
Development  
and Transition**

**Essential  
Services and  
Infrastructure**

**Community and  
Government  
services**

**Town  
Governance**  
(in 2023)

# Work to Date

- 2018

- ✓ Reference Group formed
- ✓ Terms of Reference developed and endorsed
- ✓ Gove Peninsula Economic Options report finalised

- 2019

- ✓ Reference Group Statement of Intent released
- ✓ Funding TO Vision commitment (RT/NTG/Cwth)
- ✓ Direction set for the Reference Group

- 2020

- ✓ Economic modelling completed (SEIA)
- ✓ TO Vision consultations and workshops conducted

- 2021

- ✓ TO Vision finalised and released
- ✓ Amendments agreed and passed to *Aboriginal Land Rights Act (Northern Territory) 1976*
- ✓ Joint Statement released
- ✓ Development of four work streams
- ✓ First meetings of work stream working groups
- ✓ Major investment secured in roads and telecommunications<sup>6</sup>

# Work to Date Cont.

- 2022

- ✓ Land Tenure consultancy scope settled ready to go to tender
- ✓ Town master planning scope developed
- ✓ Funding for combined 10.5MW solar farm secured
- ✓ Gove Port Tourism Precinct upgrade funding secured
- ✓ Invitation to establish Stronger Places, Stronger People site to support community strengthening over coming years
- ✓ 'Acceleration of Gove Peninsula Accommodation' EOI released for Government Employee Housing (GEH) and broader support of industry housing availability
- ✓ An update to the SEIA – a social and economic knowledge base (2021 census) and an Impact Assessment to better understand community challenges and opportunities. WSP Golder appointed as consultant to lead the work

- 2023

- ✓ Land Tenure Consultant appointed
- ✓ Rio Tinto engineering study of the condition of town assets



# Work Stream Updates



# Land Tenure

## TO Vision Objectives

- Put in place suitable land tenure that supports investment attraction now and into the future.
- Develop a masterplan for the Nhulunbuy township which aligns to the TO Vision.

## Key Actions 2023

- Consultant to support TO consideration of land tenure models and tenure transition processes completed.
- Nhulunbuy master planning consultancy underway.
- Identify processes for early diversification of land/assets on minerals title leases.

Legend:



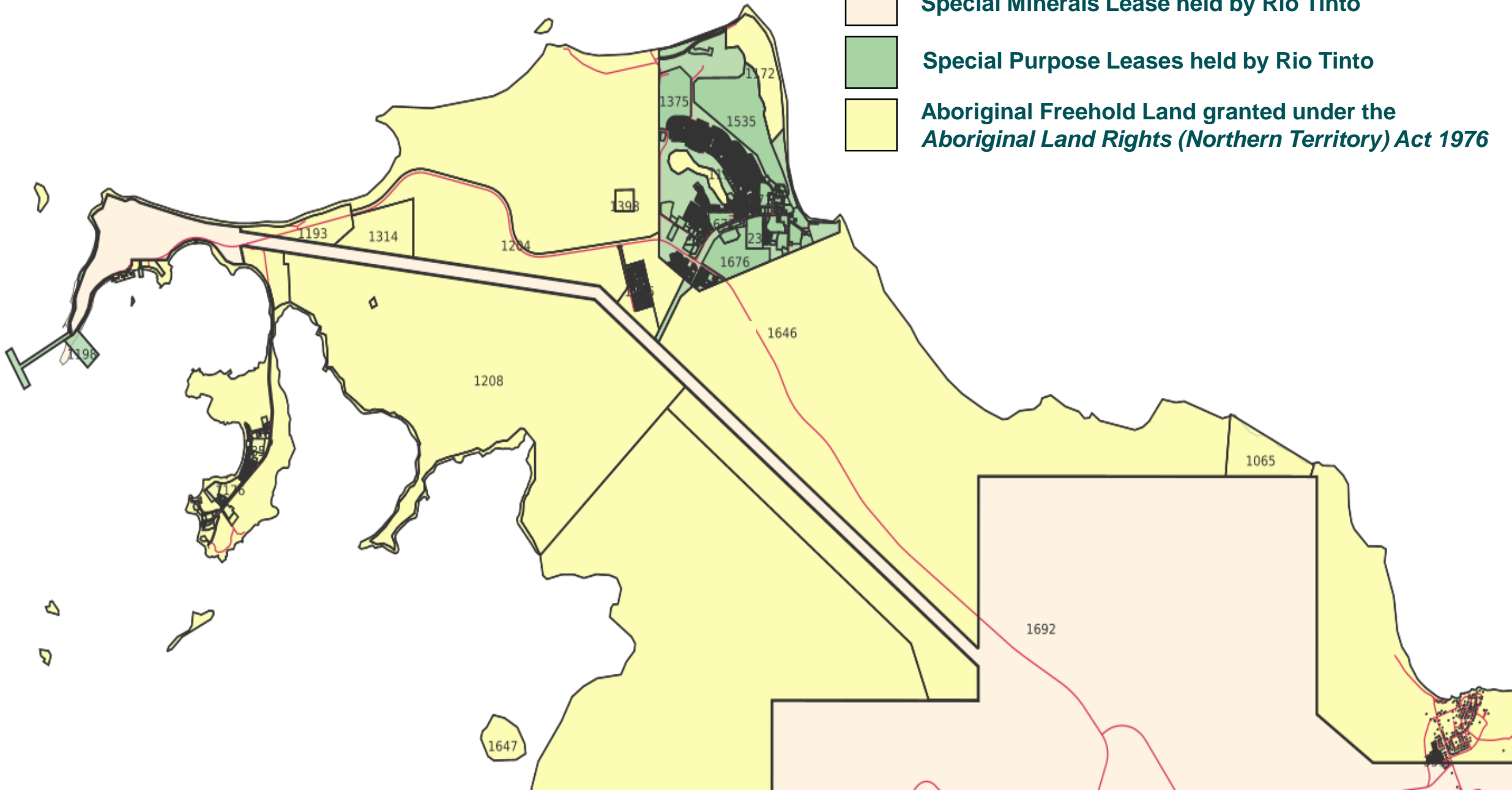
**Special Minerals Lease held by Rio Tinto**



**Special Purpose Leases held by Rio Tinto**



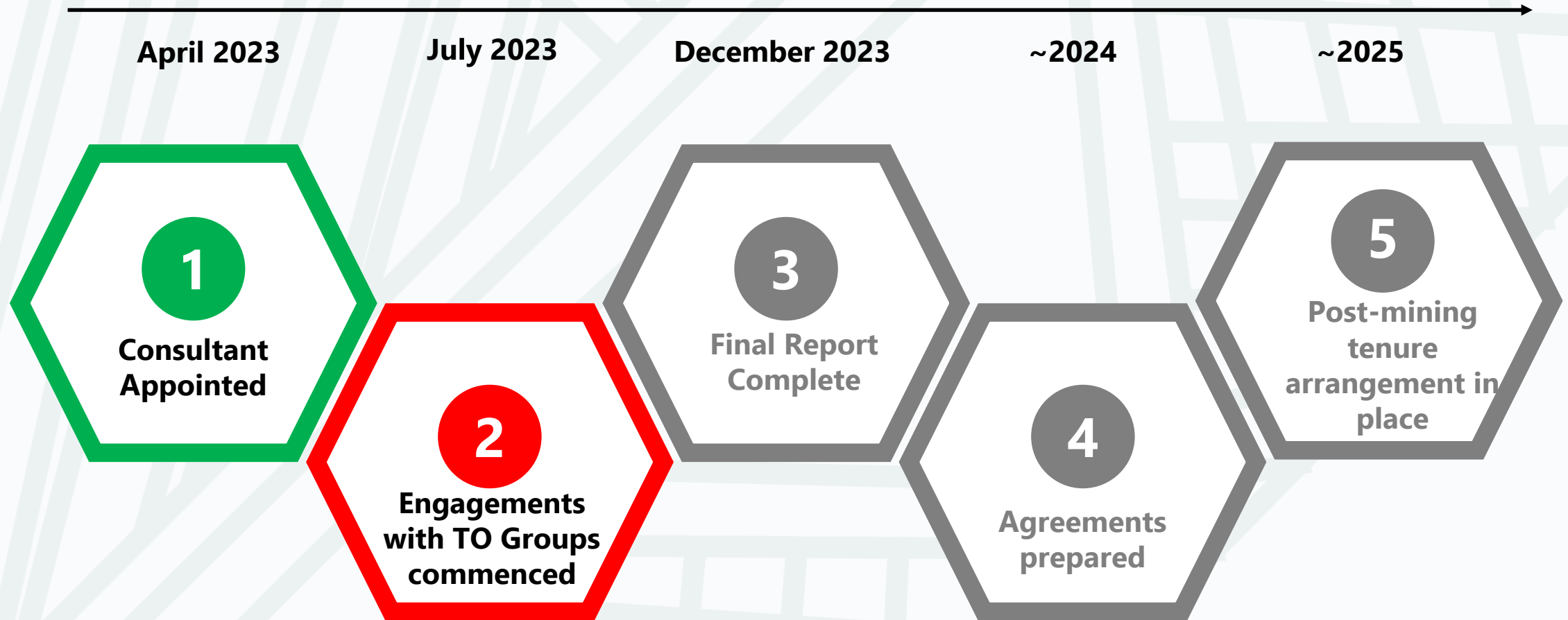
**Aboriginal Freehold Land granted under the  
*Aboriginal Land Rights (Northern Territory) Act 1976***



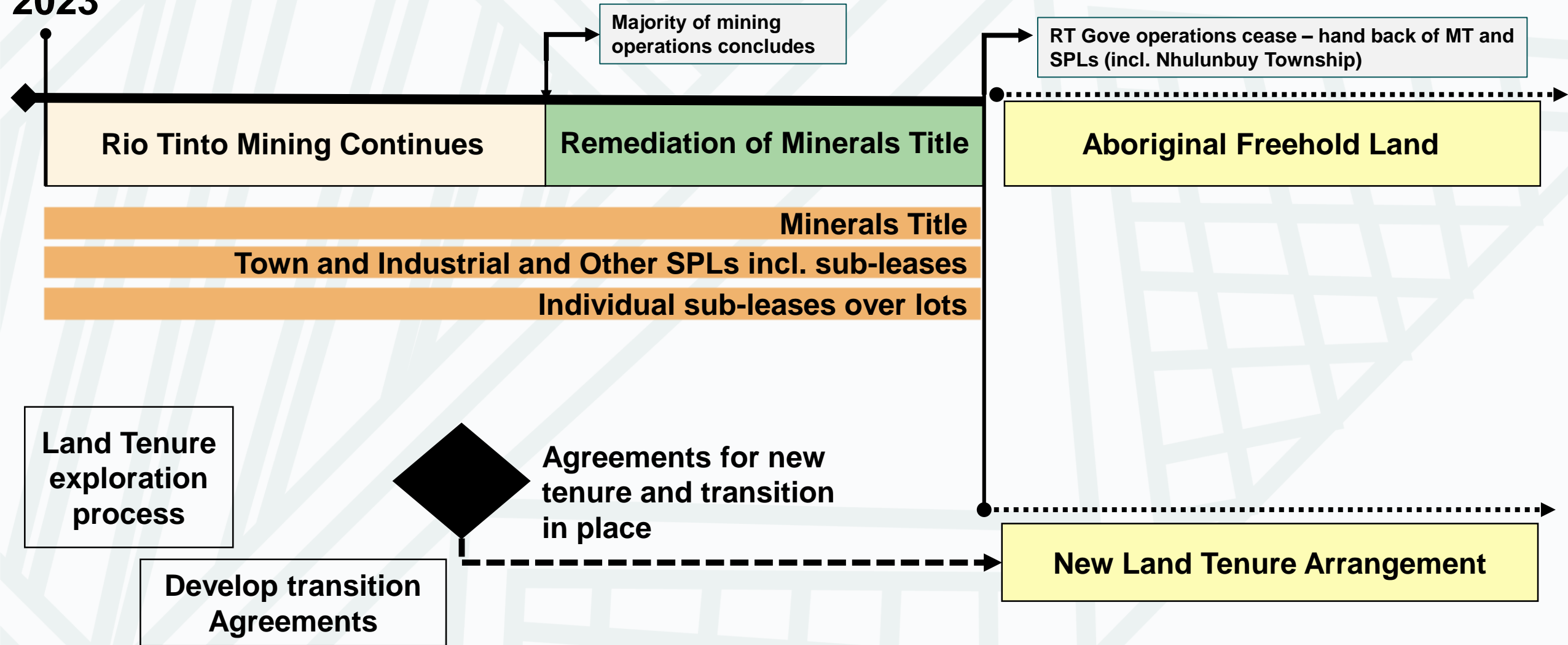
# Land Tenure Consultancy

Land Tenure Workstream

Indicative timeline for project delivery



**2023**







Any  
Questions?

# Essential Services & Infrastructure

## Objectives

- Transition of essential services to new authorities, including power generation and distribution, water and sewage.
- Securing and improving enabling infrastructure such as key roads, telecommunications, ports and airports.

## Key Actions 2023

### Sustainable power solutions

- Renewable energy supply (solar) for Gove Peninsula - complete construction in 2024
- Studies on other renewables & hybrid options for power supply, storage and scalability for future industries

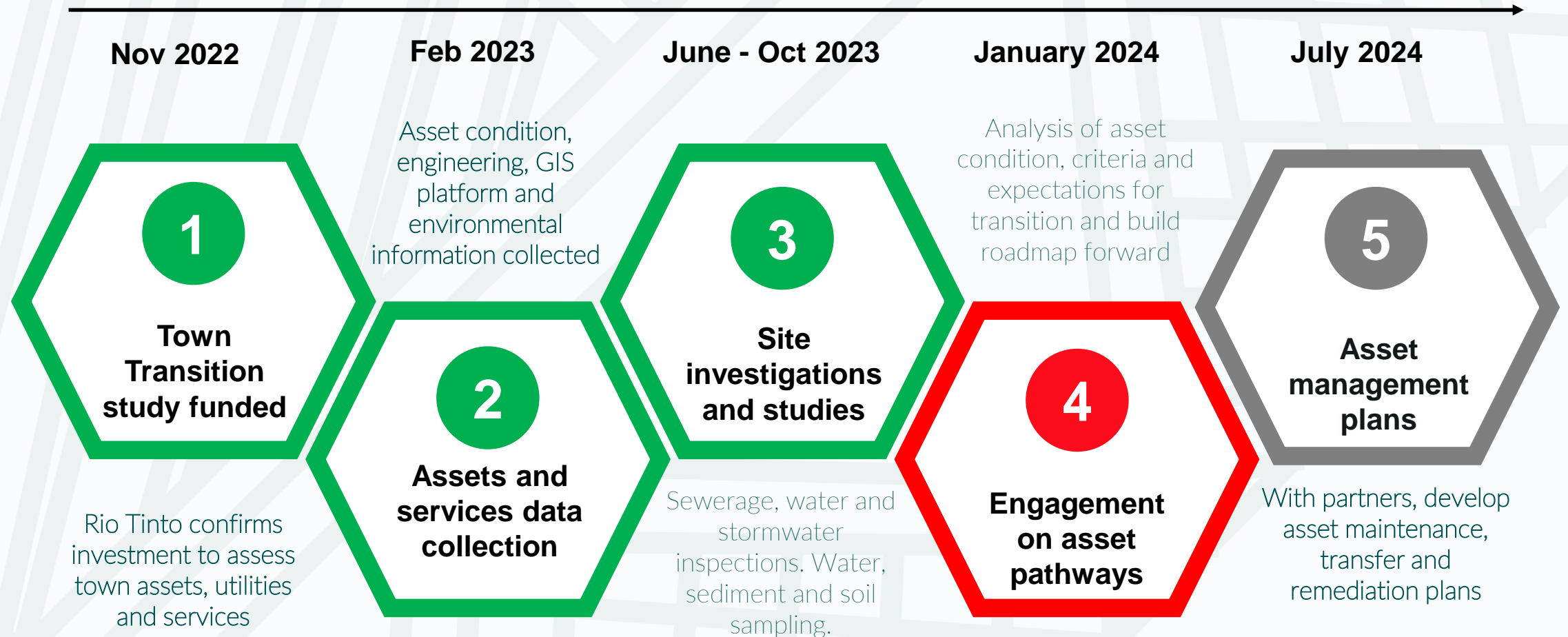
### Infrastructure enables economic transition and sustainability

- Commenced an engineering study to support Nhulunbuy town transition.
- \$14M 100 GB Optic Fibre backhaul upgrade to Arnhem Region and Yirrkala to be completed in July 2023.
- Central Arnhem Road - Early work packages for sealing works from Dhupuma to Birany Birany are currently being surveyed.
- Gove Port Masterplan (Sustainable Development Precinct)
- \$8M Gove Port tourism and commercial precinct upgrade commenced

# Engineering study

Essential Services and Infrastructure

Timeline







Any  
Questions?



# Community & Government Services

## TO Vision Objectives

- Retaining and enhancing services in the town to ensure Nhulunbuy remains a services hub for the region.
- A hub for:
  - Business support and services
  - Access to government agencies and funded services
  - Education and training with a choice of schools and education pathways (higher education, VET, adult learning) for local families
  - Health, disability and aged care
  - Regional sports facilities and competitions
  - Regional resilience and disaster response and preparedness

## Key Actions 2023

- Planning for regionalisation and strengthening of services in priority areas for consideration by Governments.
- NT Government Cyclone centre and cyclone shelter/recreation projects feasibilities.

# Yolŋu & Nāpaki Together

## TO Vision Objectives

- Nhulunbuy as a place for Yolŋu and Nāpaki to live and work together.
- Work together in spirit of trust and openness.
- Supporting Yolŋu to live in communities and homelands.
- Respecting cultural and environmental values.
- Supporting Yolŋu economic independence and workforce development.
- Brokering respectful partnerships.
- A harmonious culture among Yolŋu and Nāpaki in Nhulunbuy.
- Involvement of TOs in managing alcohol in Nhulunbuy.

## Key Actions 2023

- Dedicated resources to support workstream.
- Identification of a backbone team as part of the 'Stronger Places, Stronger People' initiative.
- Workshop to be held to identify key ways for the community to live and work together in the spirit of the TO Vision.



Any  
Questions?

# Economic Development & Transition

Yaka yurru djäma wanganygala mittjiwala  
marr nilimurru yuru djäma rrambanji ga  
wiripu-wiripu djäma.

The Gove Peninsula will be a place  
for new business ideas, building on its  
special location and history. We will have  
a diverse economy with a choice of jobs.

- Traditional Owners are fully informed and properly engaged in all potential economic development opportunities
- Existing and new businesses are supported by removing barriers and facilitating enablers
- The benefits to the region from mine closure work, town transition and long-term monitoring are maximised.
- There are respectful partnerships with Yolngu businesses.

## Key Actions 2023

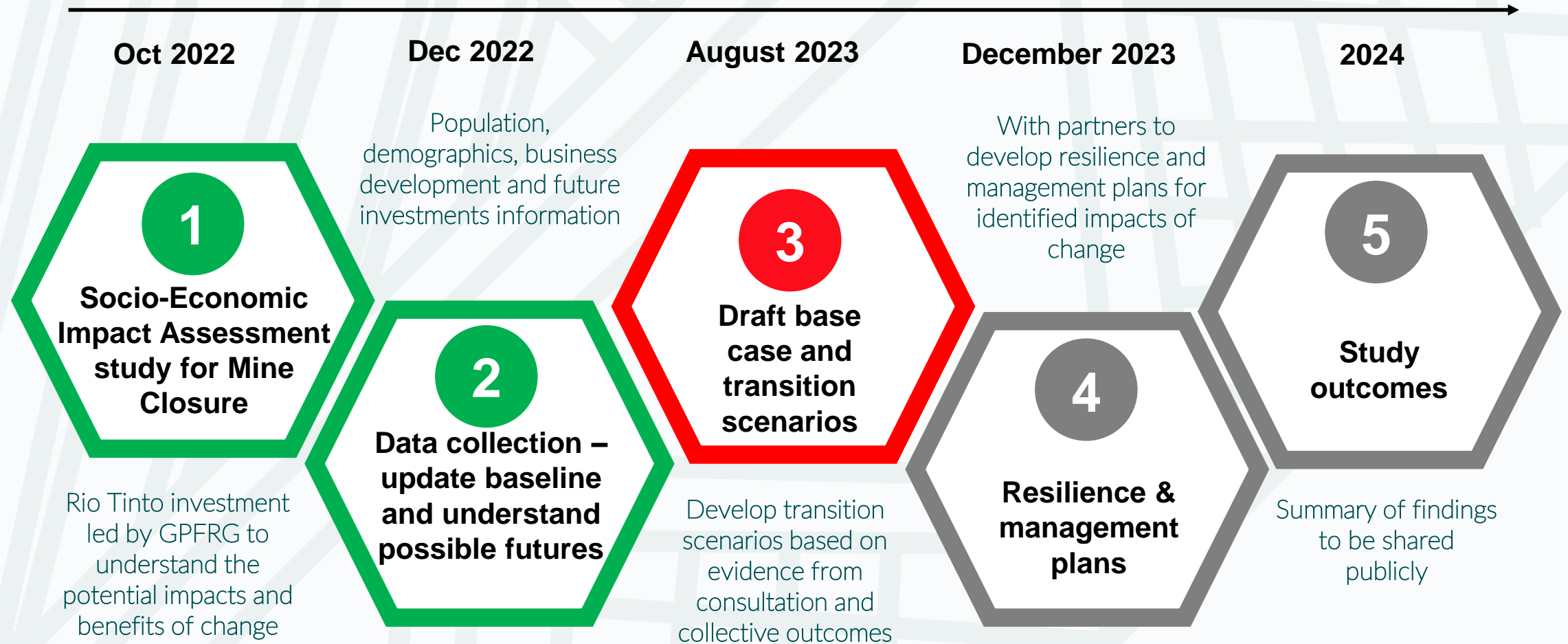
- *Refer to Regional Economic Growth Plan for region wide initiatives*
- New processes to support Traditional Owners to consider economic development opportunities.
- Social Economic Impact Assessment for mine closure and town transition:
  - Community and business surveys
  - Workforce focus group and data collection
  - Interviews with private and public organisations
- Development and implementation of a housing strategy to meet demand on the Gove Peninsula



# Socio-economic Impact Assessment (SEIA) study

Economic Development & Transition

Timeline





Any  
Questions?

# Gumatj Projects

# Rirratjinu Projects



# Panel Discussion



# Getting information

- The Reference Group invites community members to visit Gove Futures website for any further information on the TO Vision or progressing initiatives – [govefutures.nt.gov.au](http://govefutures.nt.gov.au)
- Community members are encouraged to submit any questions they may have surrounding the work of the Reference Group via [gove.futures@nt.gov.au](mailto:gove.futures@nt.gov.au)
- The Reference Group will be holding another Community Update event in November and welcomes community members and businesses to engage with live surveys in advance of the future community updates.

