

The Gove Futures Community Update was presented at the Gove Peninsula Surf Life Saving Club on the 22<sup>nd</sup> November 2022 by members of the Gove Peninsula Futures Reference Group.

Any changes made to this slide show since the 22<sup>nd</sup> of November will be noted with a red asterisk - \*

Please refer to slide 24 for an overview of amendments made.

# Gove Futures

## COMMUNITY UPDATE

A joint community update from the Gove Peninsula  
Futures Reference Group

22 November 2022



RioTinto



NORTHERN  
TERRITORY  
GOVERNMENT



Australian Government  
National Indigenous  
Australians Agency



# Agenda

- 1 Welcome**
- 2 Traditional Owners' Vision**
- 3 Reference Group Workstreams**
- 4 Work To Date**
- 5 Workstream Priorities 2022-23**

# Traditional Owners' Vision

The Gove Peninsula is one of the most special places in Australia.

Our vision is to rejuvenate the region. It will be a place for us to share our culture, and a business and services hub for all of Arnhem Land.

We will work together to create a stronger and more secure future for generations of Yolŋu and Njapaki (non-Aboriginal people) to come.

Gove Peninsula-nydjä dhuwala dhapirrk wänja dhuwala Australia.

Njilimurrungu nhänharanydjä njilimurru yurru sharing njilimurrunguwuy culture, business ga services dhiyala Arnhem Landjuru.

Marr njilimurru yurru djäma rrambanj njurikina bala yalalanjimirri wu Yolŋuwu ga Njapakiwu.



\*Click [here](#) to view the online version.

# Traditional Owners' Vision

Recognition of Traditional Owners.

Dharanjan wäṅa-waṭanjunha malanha.

Yolṅu and Njāpaki together.

Yolṅu ga Njāpaki rrambanj.

Connecting with culture and country.

Rrambanjikuma bala wāṅalili, Romlili, ga Culturelili.

A diverse economy.

Yaka yurru djāma wanganygala miṭṭjiwala marr  
ṅilimurru yuru djāma rrambanj ga wiripu-wiripu  
djāma

Rejuvenating Nhulunbuy.

Djāma Nhulunbuyinha yuṭakuma.

Nhulunbuy as a services hub.

Nhulunṅura base yurru dṅingaryun  
yalalawu marr yurru gunga'yun Yolṅunha.

Infrastructure ready for the future.

Djāma Nhulunbuyinha latju ga  
ṅāthilmirriyama yalalawu marr yurru  
wāṅa djāma manymakkuma balanyara  
biṭjan dhukkar, bāwa, houses, airport.

Town, communities and  
homelands strong together.

Nhulunbuy, Yirrkala, Gunyanjara ga  
Homeland yurru djāma rrambanj.

# Reference Group Workstreams

## Gove Peninsula Futures Reference Group



RioTinto



**Yolŋu and  
Däpaki  
Together**  
(in 2023)

**Land  
Tenure**

**Economic  
Development  
and Transition**

**Essential  
Services and  
Infrastructure**

**Community and  
Government  
services**

**Town  
Governance**  
(in 2023)



# Work to Date

- 2018

- ✓ Reference Group formed
- ✓ Terms of Reference developed and endorsed
- ✓ Gove Peninsula Economic Options report finalised

- 2019

- ✓ Reference Group Statement of Intent released
- ✓ Funding TO Vision commitment (RT/NTG/Cwth)
- ✓ Direction set for the Reference Group

- 2020

- ✓ Economic modelling completed (\*Social and Economic Impact Assessment)
- ✓ TO Vision consultations and workshops conducted

- 2021

- ✓ TO Vision finalised and released
- ✓ Amendments agreed and passed to *Aboriginal Land Rights Act (Northern Territory) 1976*
- ✓ Joint Statement released
- ✓ Development of four work streams
- ✓ First meetings of work stream working groups
- ✓ Major investment secured in roads and telecommunications





# Work to Date Cont.


- 2022

- ✓ Land Tenure consultancy scope settled ready to go to tender
- ✓ Town master planning scope developed
- ✓ Funding for combined 10.5MW solar farm secured
- ✓ Gove Port Tourism Precinct upgrade funding secured
- ✓ Rio Tinto engineering study of the condition of town assets\*
- ✓ Invitation to establish Stronger Places, Stronger People site to support community strengthening over coming years
- ✓ 'Acceleration of Gove Peninsula Accommodation'  
\*Expression of Interest released for Government Employee Housing (GEH) and broader support of industry housing availability
- ✓ Tender process for Social and Economic Impact Assessment completed and WSP Golder appointed as consultant to lead the work



# GPFRG Plan on a Page 2021-22

	<b>GPFRG purpose</b> <p>To work together to achieve the TO Vision including a positive future for Nhulunbuy and the Gove Peninsula post mining for the benefit of Yolngu land owners, local communities, businesses and industry and collaborate on key transitional priorities.</p>										
	<b>Members</b> <table> <tr> <td>Northern Land Council</td><td>Rirratjingu Traditional Owners</td></tr> <tr> <td>Gumatj Traditional Owners</td><td>Northern Territory Government</td></tr> <tr> <td>Rio Tinto</td><td>Australian Government (NIAA)</td></tr> </table>	Northern Land Council	Rirratjingu Traditional Owners	Gumatj Traditional Owners	Northern Territory Government	Rio Tinto	Australian Government (NIAA)				
Northern Land Council	Rirratjingu Traditional Owners										
Gumatj Traditional Owners	Northern Territory Government										
Rio Tinto	Australian Government (NIAA)										
	<b>Key milestones achieved</b> <table> <tr> <td>2018</td><td>✓ Terms of Reference developed and endorsed ✓ <a href="#">Gove Peninsula Economic Options report</a></td></tr> <tr> <td>2019</td><td>✓ <a href="#">Statement of Intent released</a></td></tr> <tr> <td>2020</td><td>✓ SEIA finalised and released</td></tr> <tr> <td>2021</td><td>✓ <a href="#">TO Vision and Joint Statement released</a></td></tr> <tr> <td>2021</td><td>✓ Workstream ToRs settled</td></tr> </table>	2018	✓ Terms of Reference developed and endorsed ✓ <a href="#">Gove Peninsula Economic Options report</a>	2019	✓ <a href="#">Statement of Intent released</a>	2020	✓ SEIA finalised and released	2021	✓ <a href="#">TO Vision and Joint Statement released</a>	2021	✓ Workstream ToRs settled
2018	✓ Terms of Reference developed and endorsed ✓ <a href="#">Gove Peninsula Economic Options report</a>										
2019	✓ <a href="#">Statement of Intent released</a>										
2020	✓ SEIA finalised and released										
2021	✓ <a href="#">TO Vision and Joint Statement released</a>										
2021	✓ Workstream ToRs settled										
	<b>Guiding principles for transition</b> <ol style="list-style-type: none"> <li>The Traditional Owner vision must be at the centre.</li> <li>We will work together with unity among the Clans and in partnership with Däpaki.</li> <li>We should start making decisions now, to create certainty for the future.</li> <li>Transition should create opportunities and not problems for Yolngu.</li> <li>We must empower our young people, who are our future leaders.</li> <li>We should think in new ways.</li> </ol>										

 <b>2021-22 Priorities</b>						
Workstreams	Yolngu and Däpaki together	Land Tenure	Essential Services & Infrastructure	Community & Government Services	Economic Development & transition	Town Governance
TO Vision Elements	<ul style="list-style-type: none"> <li>Town, communities and homelands strong together.</li> </ul>	<ul style="list-style-type: none"> <li>A diverse economy.</li> <li>Nhulunbuy as a services hub.</li> <li>Rejuvenating Nhulunbuy.</li> <li>Recognition of TOs</li> </ul>	<ul style="list-style-type: none"> <li>Rejuvenating Nhulunbuy.</li> <li>Infrastructure ready for the future.</li> <li>Town, communities and homelands strong together.</li> </ul>	<ul style="list-style-type: none"> <li>Nhulunbuy as a services hub.</li> <li>A diverse economy.</li> <li>Town, communities and homelands strong together.</li> </ul>	<ul style="list-style-type: none"> <li>A diverse economy.</li> <li>Nhulunbuy as a services hub.</li> <li>Yolngu and Däpaki together.</li> </ul>	<ul style="list-style-type: none"> <li>Yolngu and Däpaki together.</li> <li>Recognition of TOs</li> <li>Connecting with culture and country.</li> </ul>
2021/22 Objectives/Actions	<ul style="list-style-type: none"> <li>Community feedback from TO Vision reviewed and responded to.</li> <li>Scope for 'Yolngu and Däpaki' together workshop settled, consultants engaged.</li> <li>Workshop held between Yolngu and Däpaki to identify initiatives that will progress this workstream</li> <li>Initial actions and initiatives settled and commenced</li> </ul>	<ul style="list-style-type: none"> <li>Outcome of Cwth ALRA legislative amendments communicated</li> <li>Experts engaged to develop land tenure models, and tenure transition processes for TO/NLC consideration.</li> <li>Scope for Nhul. and surrounds masterplan settled and planners engaged/ work commenced</li> </ul>	<ul style="list-style-type: none"> <li>Feasibility study on sustainable power solution.</li> <li>Progress study for town infrastructure (waste, water services)</li> <li>Arnhem Fibre Optic Upgrade and upgrade of Nhulun 4G progressed with Telstra</li> <li>Central Arnhem Road investment strategy settled and northern region packages released</li> <li>Gove Port Masterplan commenced and Tourism precinct construction commenced</li> </ul>	<ul style="list-style-type: none"> <li>Planning for regionalisation and strengthening of services in priority areas (education, health, community safety, disability, aged care etc) for consideration by governments</li> <li>NT Government centre and cyclone shelter/recreation projects feasibilities commenced</li> <li>Town centre revitalisation supported and progressed (led by NCL)</li> </ul>	<ul style="list-style-type: none"> <li><i>Refer to Regional Economic Growth Plan for region wide initiatives.</i></li> <li>ABS Census data for Gove Peninsula released.</li> <li>Specific transition projects in partnership with DEAL:</li> <li>Housing strategy to increase supply of housing for industry on the Peninsula</li> <li>Social and Economic Impact Modelling undertaken</li> <li>Support TOs to consider viability and market potential of infrastructure available for transfer</li> </ul>	<p><b>**Workstream to commence in 2022</b></p>

# Gove Futures 2023 Plan on a Page



## Gove Peninsula Futures Reference Group (GPFRG) purpose

To work together to achieve the TO Vision including a positive future for Nhulunbuy and the Gove Peninsula post mining for the benefit of Yolŋu land owners, local communities, businesses and industry and collaborate on key transitional priorities.

## Members

Northern Land Council	Rirratjirru Traditional Owners
Gumatj Traditional Owners	Northern Territory Government
Rio Tinto	Australian Government (NIAA)

## Guiding principles for transition

1. The Traditional Owner vision must be at the centre.
2. We will work together with unity among the Clans and in partnership with Njapaki.
3. We should start making decisions now, to create certainty for the future.
4. Transition should create opportunities and not problems for Yolŋu.
5. We must empower our young people, who are our future leaders.
6. We should think in new ways.

## 2023 Priorities

Workstream	Yolŋu and Njapaki Together	Land Tenure	Essential Services & Infrastructure	Community & Government Services	Economic Development and Transition	Town Governance
	<ul style="list-style-type: none"> <li>• Town, communities and homelands strong together.</li> </ul>	<ul style="list-style-type: none"> <li>• A diverse economy.</li> <li>• Nhulunbuy as a services hub.</li> <li>• Rejuvenating Nhulunbuy.</li> <li>• Recognition of TOs.</li> </ul>	<ul style="list-style-type: none"> <li>• Rejuvenating Nhulunbuy.</li> <li>• Infrastructure ready for the future.</li> <li>• Town, communities and homelands strong together.</li> </ul>	<ul style="list-style-type: none"> <li>• Nhulunbuy as a services hub.</li> <li>• A diverse economy.</li> <li>• Town, communities and homelands strong together.</li> </ul>	<ul style="list-style-type: none"> <li>• A diverse economy.</li> <li>• Nhulunbuy as a services hub.</li> <li>• Yolŋu and Njapaki together.</li> </ul>	<ul style="list-style-type: none"> <li>• Yolŋu and Njapaki together.</li> <li>• Recognition of TOs</li> <li>• Connecting with culture and country.</li> </ul>
TO Vision Elements						
Objectives/Actions	<ul style="list-style-type: none"> <li>• Dedicated resources to support work stream.</li> <li>• Identification of a backbone team as part of the 'Stronger Places, Stronger People' initiative.</li> <li>• Workshop held to identify key areas as a community to live together as Yolŋu and Njapaki as stated in the vision statement.</li> </ul>	<ul style="list-style-type: none"> <li>• Consultations with TOs surrounding land tenure models and tenure transition processes completed.</li> <li>• Masterplan consultancy for Nhulunbuy underway</li> <li>• Identify early diversification of land/assets on minerals title leases.</li> <li>• Develop agreements to lease with Traditional Owners.</li> </ul>	<ul style="list-style-type: none"> <li>• Long-term sustainable power distribution, storage and supply: study scope, funding agreed and consultancy underway.</li> <li>• Sustainable essential infrastructure in Nhulunbuy, Prefeasibility study commenced.</li> <li>• Arnhem Fibre Optic Upgrade commenced for Nhulunbuy and Yirrkala</li> <li>• Central Arnhem Road northern package released.</li> <li>• Gove Port tourism precinct construction commenced.</li> </ul>	<ul style="list-style-type: none"> <li>• Planning for regionalisation and strengthening of services in priority areas (education, health, community safety, disability, aged care etc.) for consideration by governments.</li> <li>• NT Government centre and cyclone shelter/recreation projects feasibilities commenced.</li> <li>• Town centre revitalisation supported and progressed (led by NCL).</li> </ul>	<ul style="list-style-type: none"> <li>• Refer to <i>Regional Economic Growth Plan</i> for region wide initiatives.</li> <li>• Social Economic Impact Assessment engagement and consultation for data collection and modelling</li> </ul> <p>Specific transition projects in partnership with DEAL:</p> <ul style="list-style-type: none"> <li>• Development and implementation of a housing strategy to meet demand on the Gove Peninsula</li> <li>• Development and implementation of investment portfolio to support Traditional Owners: viability and market potential of investment opportunities, incl. infrastructure assets available for transfer.</li> </ul>	<ul style="list-style-type: none"> <li>• Terms of Reference settled</li> <li>• Town Governance modelling: scope agreed and consultant engaged.</li> </ul>

\*Legend:



**\*Special Minerals Lease held by Rio Tinto**

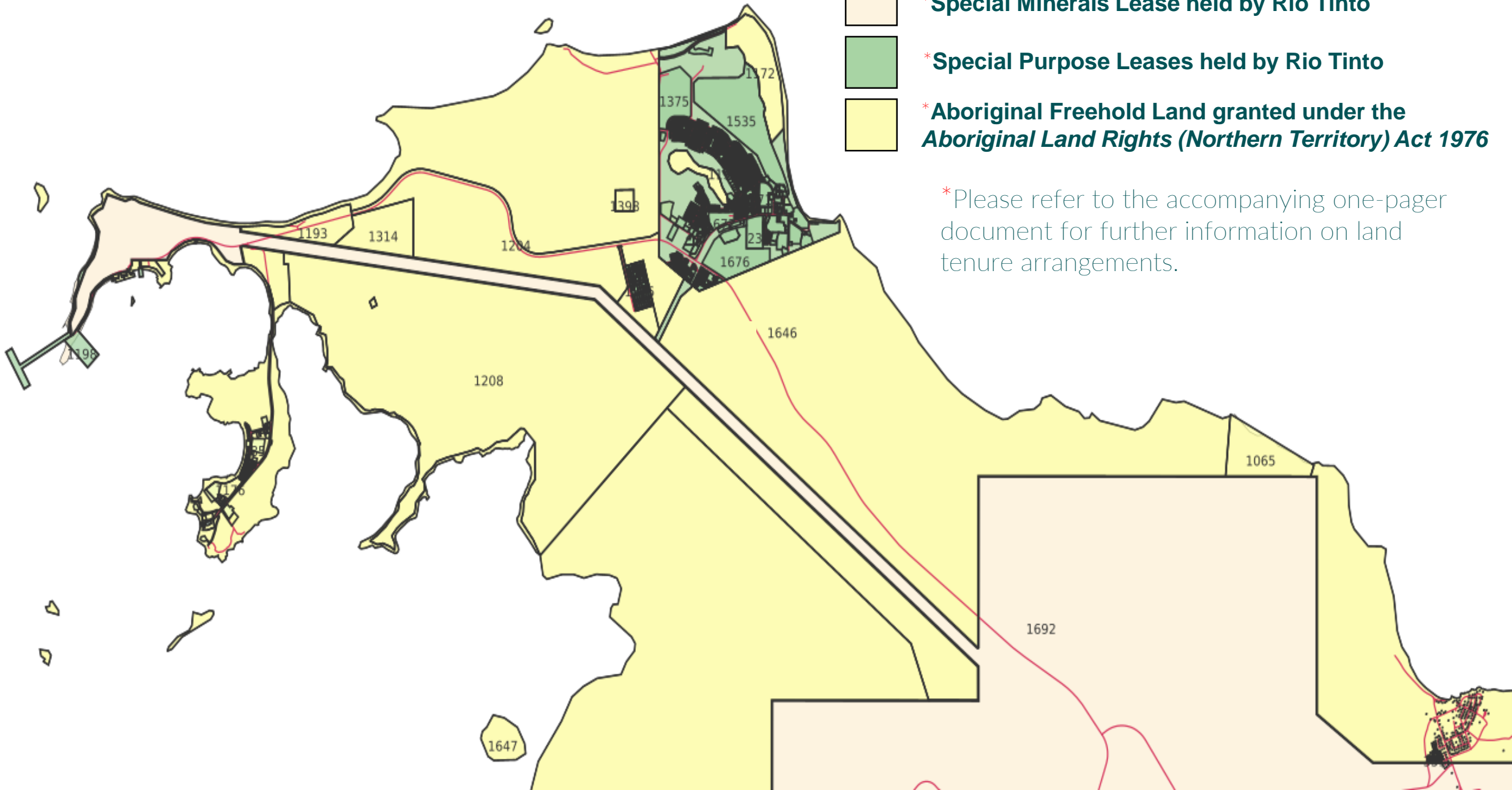


**\*Special Purpose Leases held by Rio Tinto**



**\*Aboriginal Freehold Land granted under the  
*Aboriginal Land Rights (Northern Territory) Act 1976***

\*Please refer to the accompanying one-pager document for further information on land tenure arrangements.





# Land Tenure

## Objectives

- Put in place suitable land tenure that supports investment attraction now and into the future and which addresses key TO vision principles by:
  - exploring and developing the preferred land tenure beyond the SPLs (under ALRA); and
  - Settling the tenure transition arrangements from the SPLs to new tenure under ALRA
- Develop a masterplan for the Nhulunbuy township which aligns to the TO Vision and supports the future industries and population growth.

## Key Actions 2021-22

- *Aboriginal Land Rights (Northern Territory) Act 1976* amendments made
  - **Benefit** - Traditional Owners can now make decisions about the preferred tenure arrangements for Nhulunbuy and other mining related leased areas for when mining finishes.
- Land tenure options and transition arrangements that achieve TO Vision.
  - Land Tenure consultancy scope has been settled and is at procurement stage
  - **Benefit** – Expert advice for Traditional Owners to inform decision making about future land tenure options.
- Nhulunbuy and surrounds master planning for future growth
  - Master planning scope has been settled.
  - **Benefit** – Procure expert advice for Traditional Owners and other stakeholders to prepare a masterplan for the township of Nhulunbuy to share future infrastructure and investment

# Land Tenure

## Objectives

- Put in place suitable land tenure that supports investment attraction now and into the future and which addresses key TO vision principles by:
  - exploring and developing the preferred land tenure beyond the SPLs (under ALRA); and
  - Settling the tenure transition arrangements from the SPLs to new tenure under ALRA
- Develop a masterplan for the Nhulunbuy township which aligns to the TO Vision and supports the future industries and population growth.

## Key Actions 2023

- Consultancies to support TO consideration of land tenure models and tenure transition processes completed
  - Consultants to commence engagements and workshops with TO groups in early 2023
  - Final report of preferred Land Tenure arrangements to be presented to TOs and the Reference Group by mid 2023
  - Develop agreements to lease with Traditional Owners
- Masterplan consultancy for Nhulunbuy underway
  - Consultants to commence work in mid 2023, with work taking place over a 12 month period
  - Final report of preferred arrangements to be presented to TOs and The Reference Group by early 2024
- Identify early diversification of land/assets on minerals title leases
  - A Land Tenure Sub-Working Group formed to explore potential pathways for diversification of land on mining related leases before mining finishes (commenced in 2022)

# Essential Services & Infrastructure

## Objectives

- Transition of essential services to new authorities, including power generation and distribution, water and sewerage.
- Securing and improving enabling infrastructure such as key roads, telecommunications, ports and airports.

## Key Actions 2021-22

- Feasibility study for longer term power and distribution systems undertaken
  - Renewable (solar) power supply for Gove Peninsula fully funded by Rio Tinto
  - Further studies on power storage and scalability for future industries planned
- Key infrastructure to enable economic transition and sustainability
  - Order of Magnitude study for town infrastructure (eg waste, water services) completed
  - Arnhem Fibre Optic upgrade and upgrade of Nhulunbuy 4G progressed with Telstra
  - Central Arnhem Road investment strategy settled and early works completed
  - Gove Port masterplan funding secured – and tourism precinct works commenced
  - Communication of outcomes of airport resource study



# Essential Services & Infrastructure

## Objectives

- Transition of essential services to new authorities, including power generation and distribution, water and sewerage.
- Securing and improving enabling infrastructure such as key roads, telecommunications, ports and airports.

## Key Actions 2023

- Long-term sustainable power distribution, storage and supply: study scope and funding agreed and underway.
  - Scope development lead by NTG with study commencing
  - Solar installations funded by Rio Tinto with construction commencing Q1 2023
- Sustainable town infrastructure in Nhulunbuy, engineering\* study commenced.
  - Asset inspections commencing Q1 2023 – commercial and housing assets, underground services, key assets (tip/airport)
- Optic fibre upgrades commenced for Arnhem region and Yirrkala community
  - \$8M Arnhem Fibre Backhaul upgrade works commenced
  - \$4M Yirrkala FTTP NBN upgrade
- Central Arnhem Road
  - \$230M of funding secured and a further ~\$200M committed
  - Planning for 90km of sealing works on the norther sections
  - for construction in 2024-25.
  - Negotiations for additional share of \$350M of additional AG funds
- Gove Port tourism and commercial precincts
  - \$8M Gove Port tourism precinct upgrade – construction commenced.
  - Gove Port commercial area masterplan to undertaken in 1<sup>st</sup> half of 2023 with \$10M of NTG co-investment available.

# \* Essential Services & Infrastructure



## Renewable energy for the future

- Formal process through \* Aboriginal Areas Protection Authority for site on \* Special Purpose Lease 214 (A)
  - Traditional Owner engagement on cultural heritage assessment for land use as solar farm
- Rio Tinto funding to develop 10.5MW capacity with two solar installations reducing CO2 emissions
  - 16% p/a during mining
- Renewable aligns with transition to long-term sustainable energy for the Peninsula beyond Rio Tinto operations (to NT Power & Water standards)
- Enables future commercial opportunities for Traditional Owner revenue streams post-mining
- Sites located near demand to avoid network transmission losses. Sites A & B ideally located for tie-in to 22KV distribution network
- Both sites are located within existing leases and do not increase the existing footprints for this land use
- A future storage solution will be required to augment renewable power system and future growth



# Economic Transition

## Objectives

- Maximising the benefits to the region from mine closure work, town transition and long-term monitoring.
- Supporting existing businesses to grow and diversify.
- Facilitating investment in new industries.
- Building capacity of the local workforce.
- Ensuring housing for industry growth.
- Fostering respectful partnerships with Yolŋu Businesses.

## Key Actions 2021-22

- Industry Housing and Accommodation
  - Analysis of existing supply and demand completed.
  - 'Acceleration of Gove Peninsula Accommodation' EOI released for Government Employee Housing (GEH) and broader support of industry housing availability.
  - Rio Tinto engaging construction partner for development of duplex properties.
- Social and Economic Impact Assessment
  - Tender process completed and WSP Golder appointed as consultant to lead the work. Inform our understanding of community social and economic needs and opportunities as we transition into the future.
  - Base Case workshops scheduled for first week of December
- Opportunities for Traditional Owners
  - Rio Tinto Gove Operations Asset Information Memorandum developed to present facts about key assets which may - subject to the decision of TOs - be utilised by third parties to aid in the attraction of investors and new industry.
  - Investment Portfolio Prioritisation approach developed to allow for informed decision making by Traditional Owners
  - Specific industry opportunities progressed



# Economic Transition

## Objectives

- Maximising the benefits to the region from mine closure work, town transition and long-term monitoring.
- Supporting existing businesses to grow and diversify.
- Facilitating investment in new industries.
- Building capacity of the local workforce.
- Ensuring housing for industry growth.
- Fostering respectful partnerships with Yolŋu Businesses.

## Key Actions 2023

- Industry Housing and Accommodation
  - Negotiations on Government Employee Housing progressing and construction started Rio Tinto duplex properties.
  - Development of Housing and Accommodation Strategy by DEAL.
- Social and Economic Impact Assessment (SEIA)
  - Consultation and engagement for the SEIA will be completed, to build the next steps in transition planning\*.
  - A report will be finalised and summary made available to the wider community.
- Opportunities for Traditional Owners
  - Rio Tinto Gove Operations Asset Information Memorandum published
  - Investment Portfolio Prioritisation Framework implemented and being used to guide informed decision making on opportunities.
  - Specific industry opportunities progressed

# Community & Government Services

## Objectives

- Retaining and enhancing services in the town to ensure Nhulunbuy remains a services hub for the region.
- A hub for:
  - Business support and services
  - Access to government agencies and funded services
  - Education and training with a choice of schools and education pathways (higher education, VET, adult learning) for local families
  - Health, disability and aged care
  - Regional sports facilities and competitions
  - Regional resilience and disaster response and preparedness

## Key Actions 2023

- Community infrastructure
  - Seek Australian Government support for Nhulunbuy Community Multipurpose Centre and Cyclone Shelter bid (commitments already secured from NTG, NCL and other stakeholders)
- Planning for future Government Services
  - Initial feasibility study for co-location of NTG services to support seamless customer experiences
  - Consult TOs and community members to understand preferences for government (and other) services and corresponding population thresholds for viability to inform related workstreams
  - Continued regionalisation of NT Government services

# Gumatj Projects

\*Gumatj Corporation CEO Klaus Helms provided an update on a range of projects which are currently underway on or are being planned for the Gove Peninsula.

\*If you would like to learn more, please visit the Gumatj Corporation website at [Gumatj | Gumatj website](#).



# Rirratjingu Projects

\*Rirratjingu Aboriginal Corporation CEO Rhian Oliver provided an update on a range of projects which are currently underway on or are being planned for the Gove Peninsula.

\*If you would like to learn more, please visit the Rirratjingu Aboriginal Corporation website at [Rirratjingu Aboriginal Corporation](#).

# Questions and discussion



# Getting information

- The Reference Group invites community members to visit Gove Futures website for any further information on the TO Vision or progressing initiatives – [govefutures.nt.gov.au](https://govefutures.nt.gov.au)
- Community members are encouraged to submit any questions they may have surrounding the work of the Reference Group via [gove.futures@nt.gov.au](mailto:gove.futures@nt.gov.au)
- The Reference Group will be holding two more community updates in 2023 and welcomes community members and businesses to engage with live surveys in advance of the future community updates.



# Slide Amendments:

- Slide 4 – Added a hyperlink to the online version of the TO Vision.
- Slide 7 – SEIA abbreviation expanded to Social and Economic Impact Assessment.
- Slide 8 – EOI abbreviation expanded to Expression of Interest.
- Slide 8 – Plain English language change to engineering study
- Slide 11 – Legend and Key Terms added.
- Slide 15 – Plain English language change to engineering study
- Slide 16 – Essential Services and Infrastructure title added.
- Slide 16 Cont. – AAPA abbreviation expanded to Aboriginal Area Protection Authority.
- Slide 16 Cont. – SPL abbreviation expanded to Special Purpose Lease.
- Slide 16 Cont. – Site location indicators added to correspond with text (e.g. A & B).
- Slide 18 – Remove repeated text and clarify action “ to build the next steps in transition planning”.
- Slide 20 – Updated slide with text with talking points from Gumatj Corporation.
- Slide 20 Cont. – Added a hyperlink to the Gumatj Corporation Website.
- Slide 21 - Updated slide with text with talking points from Rirratjinu Aboriginal Corporation.
- Slide 21 Cont. – Added a hyperlink to the Rirratjinu Aboriginal Corporation website.