

Gove Futures

October 2024 Community Update



**NORTHERN
LAND COUNCIL**
Our Land, Our Sea, Our Life



Australian Government
National Indigenous
Australians Agency



Australian Government
Department of Infrastructure,
Transport, Regional Development,
Communications and the Arts

RioTinto



**NORTHERN
TERRITORY
GOVERNMENT**

Agenda

1 Welcome

2 TO Vision

3 Mine Closure Update

4 GPFRG Activities

4 TO Corporation Update

5 Key Project Update

Traditional Owners' Vision

The Vision provides the foundations for Yolŋu land owners, residents, businesses and industry to work together to achieve a positive post-mining future for the region.



Planning for the future

The Reference Group was formed in 2019 as a robust and collaborative approach to decision-making in order transition away from mining successfully.



**NORTHERN
LAND COUNCIL**
Our Land, Our Sea, Our Life



Australian Government
**National Indigenous
Australians Agency**



Australian Government
**Department of Infrastructure, Transport,
Regional Development and Communications**



RioTinto

Gove Peninsula Futures Reference Group

**Yolŋu and
Ŋäpaki Together**

**Land
Tenure**

**Economic
Development
& Transition**

**Essential
Services &
Infrastructure**



**Community &
Government
Services**

**Town
Governance**

Gove Mine Closure Socio-Economic Impact Assessment

We know change is coming. The SEIA provides insight into what the impacts of the transition will be.



| Gove Peninsula employment (number of jobs) | Current situation | Rio Tinto closure | Base Case (by 2037) | Scenario 1 (by 2037) | Scenario 2 (by 2037) |
|---|-------------------|-------------------|------------------------|-------------------------|-------------------------|
|  | 1,735 | 818 (-917) | 1,509 (-226) | 1,905 (+170) | 2,847 (+1,112) |
| Nhulunbuy population (number of residents) | Current situation | Rio Tinto closure | Base Case (by 2037) | Scenario 1 (by 2037) | Scenario 2 (by 2037) |
|  | 3,600 | 1,621 (-1,979) | 2,367 (-1,233) | 2,823 (-777) | 3,734 (+134) |

Rio Tinto Closure Activities

Rio Tinto is progressing a number of closure-related works at the refinery and in Nhulunbuy township.

Actions Underway

- Refinery Demolition.
- Electrical outages in 2024 – redundant infrastructure.



Preparing town infrastructure for transition

Rio Tinto have been working to understand and improve the current state of assets and infrastructure to ensure readiness for transition.

Actions Underway

- Asset investigations completed.
- NCL potable water campaign.
- Scoping work for sewer relining and intersection work - scheduled for 2025.



Housing

Housing is a key issue and priority for residents and stakeholders and is closely linked to liveability, employment opportunities and economic growth in the region.

Actions Underway

- Rio Tinto is transitioning to a FIFO model to enable housing relief in Nhulunbuy.
- Land release – vacant lots to be released to Traditional Owners – Q4 2024.
- Housing demolition – proceeding with demolition of a small number of houses beyond repair – Q1 2025.
- Gove Peninsula Housing Strategy – completion by Q1 2025.
- Accelerated Regional Accommodation Project.

Nhulunbuy Master Plan

The Master Plan will describe how Nhulunbuy could look, feel and function in the future.

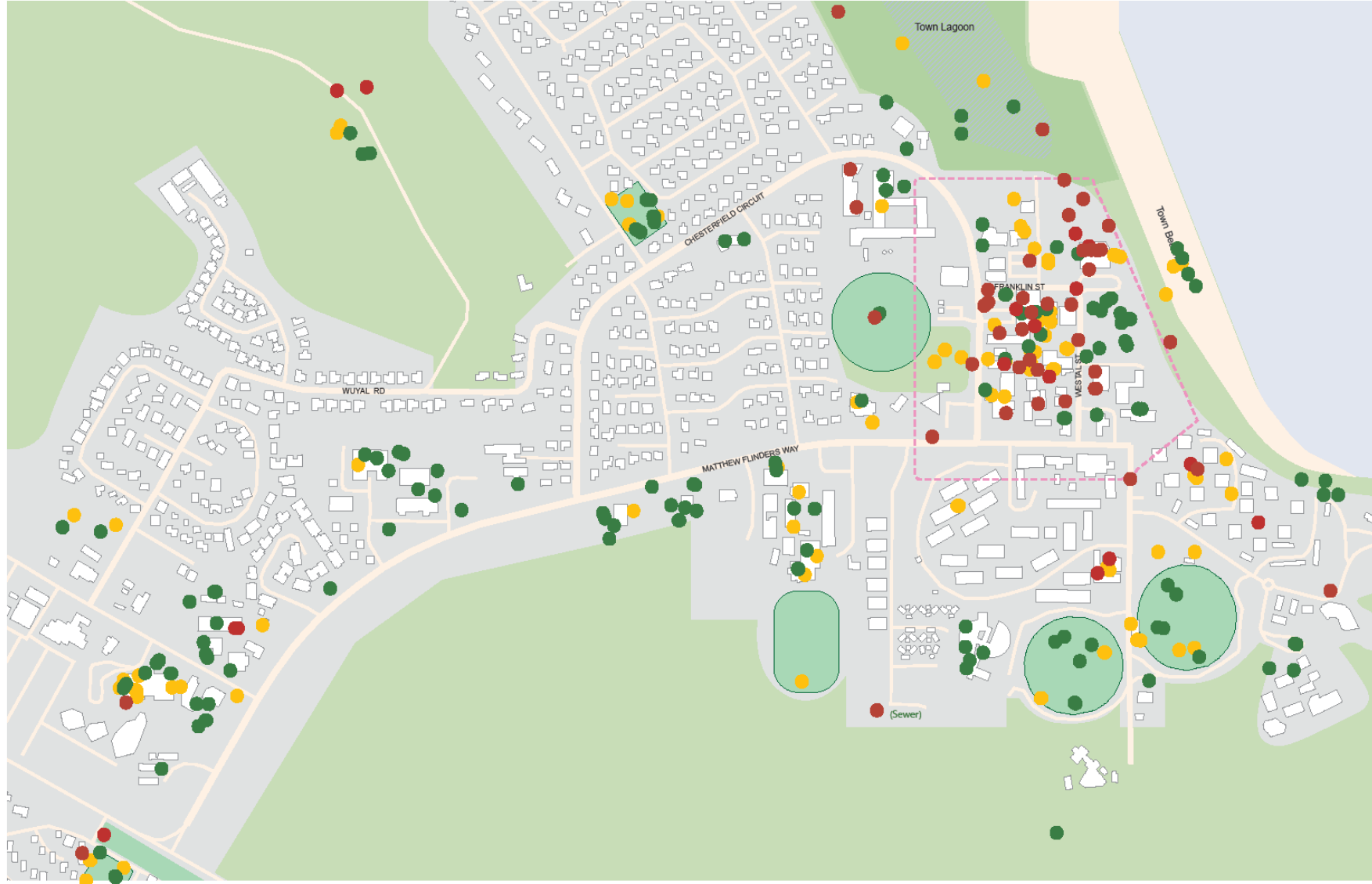
Master Planning Consultancy

- Design team developing a Master Plan for Nhulunbuy township and industrial area.
- Community consultations completed in September via *Re-imagining Nhulunbuy* workshops with TOs, local business, service providers, community organisations and residents.
- Next round of community consultations in November: *Developing Options*.

Help us shape the Nhulunbuy Master Plan by completing the online survey!



Nhulunbuy Master Plan: *stakeholder views of Place*



Legend:



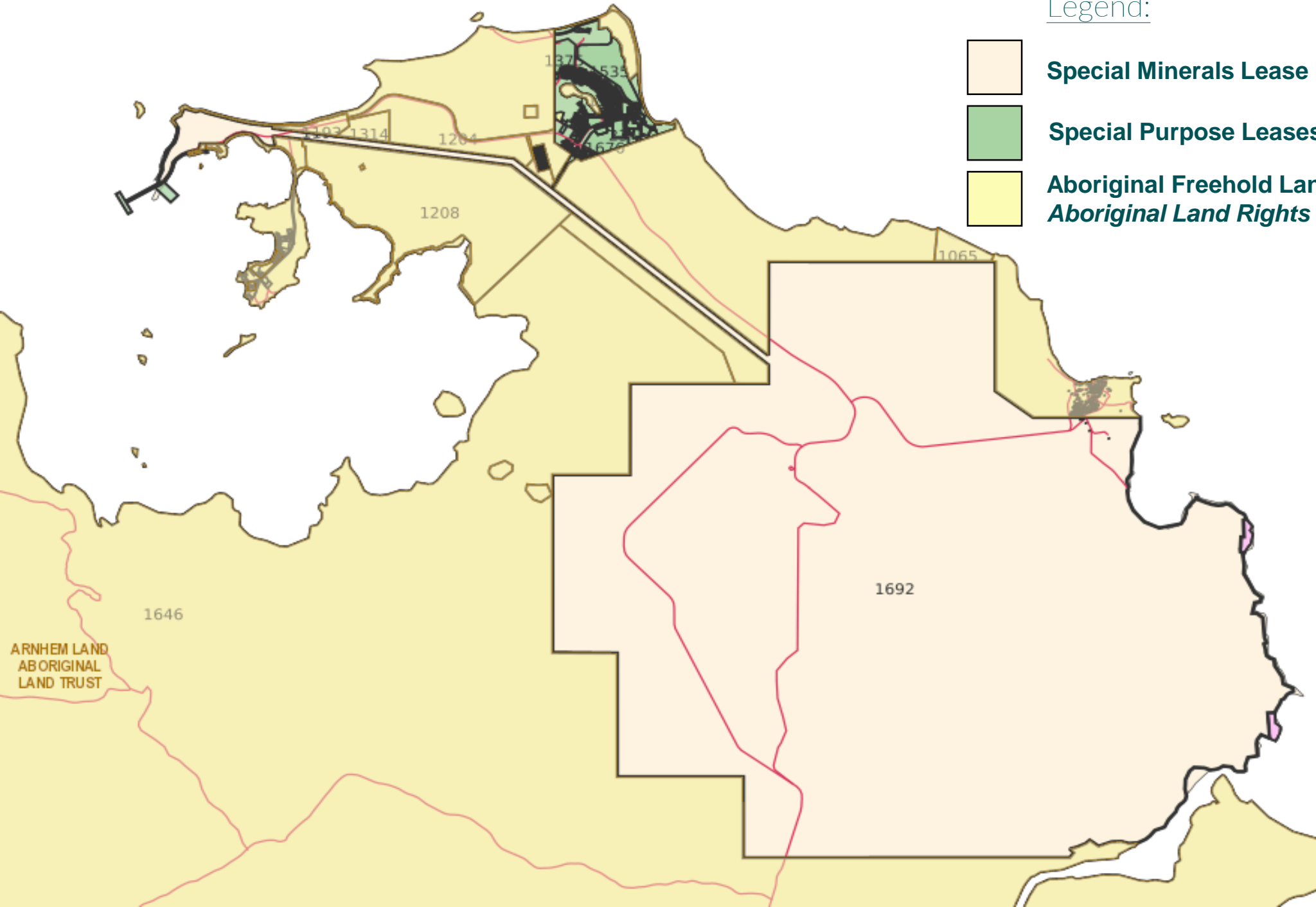
Special Minerals Lease held by Rio Tinto



Special Purpose Leases held by Rio Tinto



**Aboriginal Freehold Land granted under the
*Aboriginal Land Rights (Northern Territory) Act 1976***



ARNHEM LAND
ABORIGINAL
LAND TRUST

1646

1208

1692

1065

1204

1314

1372

535

676

Long Term Land Tenure Arrangements

Identifying suitable new land tenure arrangements that supports investment attraction now and into the future.

Land Tenure Consultancy

- Options Paper outlining all tenure options developed.
- Nhulunbuy Land Tenure Options Survey completed in April 2024.
- Work continues with TOs to confirm a preferred land tenure model.
- Formal NLC statutory arrangements to follow.

Access to Services in Nhulunbuy

Understanding how people use Nhulunbuy as a service hub, and how changes to available services would influence people's decision to stay or leave following the mine closure.

What matters most to residents in Nhulunbuy is:



Access to quality and affordable housing



Improvements to physical infrastructure



Access to healthcare and quality of life amenities

What matters most to business owners and services providers in Nhulunbuy is:



Access to commercial and residential property



A stable economy and future growth



Improvements to physical infrastructure

East Arnhem Service Preference Study

- Nhulunbuy Choice Modelling Survey completed in late 2023.
- The next phase of work is currently underway to understand the services needs of those living in the broader East Arnhem region.

Town Governance

Understanding how the future local government model will operate post-mining.

Workstream Development

- Nhulunbuy Corporation (subsidiary of Rio Tinto) are the current local government authority for the Nhulunbuy township.
- Town Governance workstream being developed to consider what future local governance options could look like following mine closure.
- First project will be a feasibility of future town governance options.

Traditional Owner Business Update



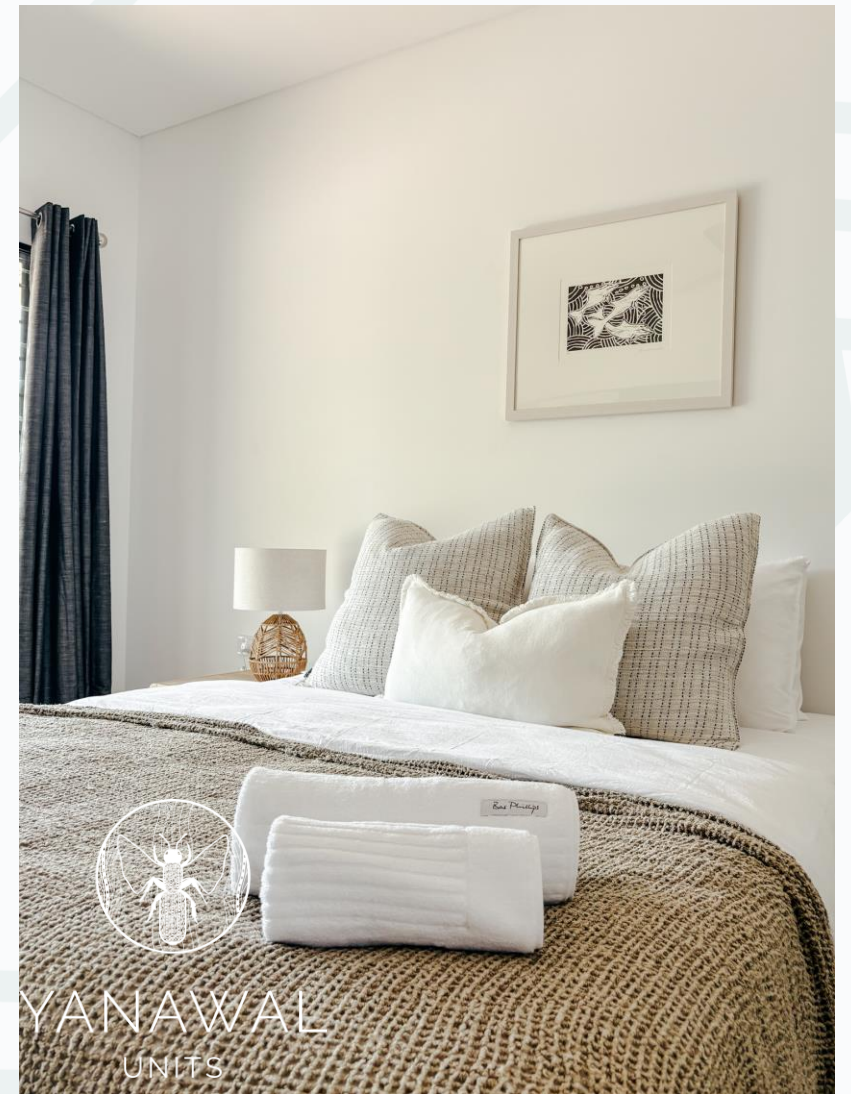
- Short Term Accommodation Projects
- Accelerated Regional Accommodation / housing projects
- Rirratjingu Career Pathway Program - Barawun Centre



**Rirratjingu
Aboriginal
Corporation**

Yanawal Units

- 15 Quality hotel rooms
- Currently \$270 per night
- Guests seem to enjoy the quiet atmosphere
- Starting to see some good occupancy rates
- **Booking Information:** Please contact East Arnhem Real Estate at 08 8987 2209 for reservations



**Rirratjingu
Aboriginal
Corporation**

Wallaby Beach Workers Camp

- **Expanded Accommodation:** Installation of an additional 24 rooms has been completed, adding to the existing 12 rooms.
- **High Demand:** Strong occupancy levels are expected to continue through to Christmas.
- **Upcoming Improvements:** Plans are underway to enhance the property with lawn and garden installations in the coming week.
- **Booking Information:** Please contact East Arnhem Real Estate at 08 8987 2209 for reservations



**Rirratjingu
Aboriginal
Corporation**

200 Person Workers Camp

- Camp will still be established at the G3 Mess Hall site.
- Capacity adjusted following recent developments. Reduced from the original 260 person plan to 200 person plan due to site related challenges.
- Finalising agreements with Rio Tinto



**Rirratjingu
Aboriginal
Corporation**

Accelerated Regional Accommodation & New Housing Projects

- Discussions continue with the Northern Territory Government (NTG) regarding the Accelerated Regional Accommodation project.
- Five blocks have been allocated for the construction of two-bedroom duplexes. 10 dwellings
- Additional details will be shared on further construction as more land becomes available in the short term.



**Rirratjingu
Aboriginal
Corporation**



Rirratjingu Career Pathway Program



- 46 Engagements
- 12 Job Placements
- CPP seeking active participation from local businesses
- Training with external providers
- Contact RAC for more information



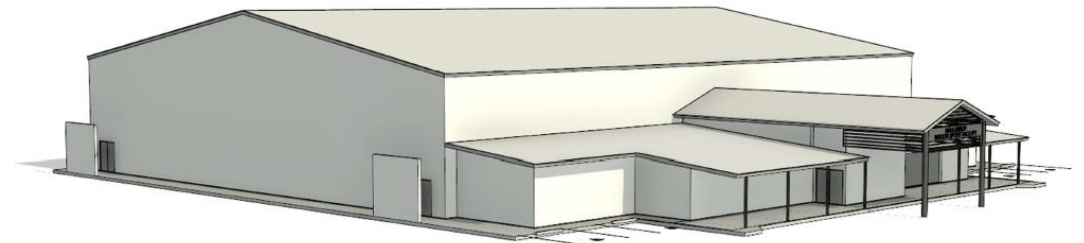
**Rirratjingu
Aboriginal
Corporation**

Nhulunbuy Multipurpose Cyclone Shelter

Plans to safeguard Nhulunbuy against disaster risk.

Project Update

- Commonwealth Government has offered \$15M to the construction of a cyclone shelter in Nhulunbuy.
- Co-contribution to be reviewed by new Territory Government.
- Concept includes a multi-purpose community space and possible youth centre.



Solar Farm Development

Working towards a more sustainable power supply for the region beyond mining.

Project Update

- Two new solar farms under construction following agreement with Rirratjingu and Gumatj Traditional Owner Groups.
- Combined capacity of 10.5MW.
- The project is scheduled to be completed in early 2025.

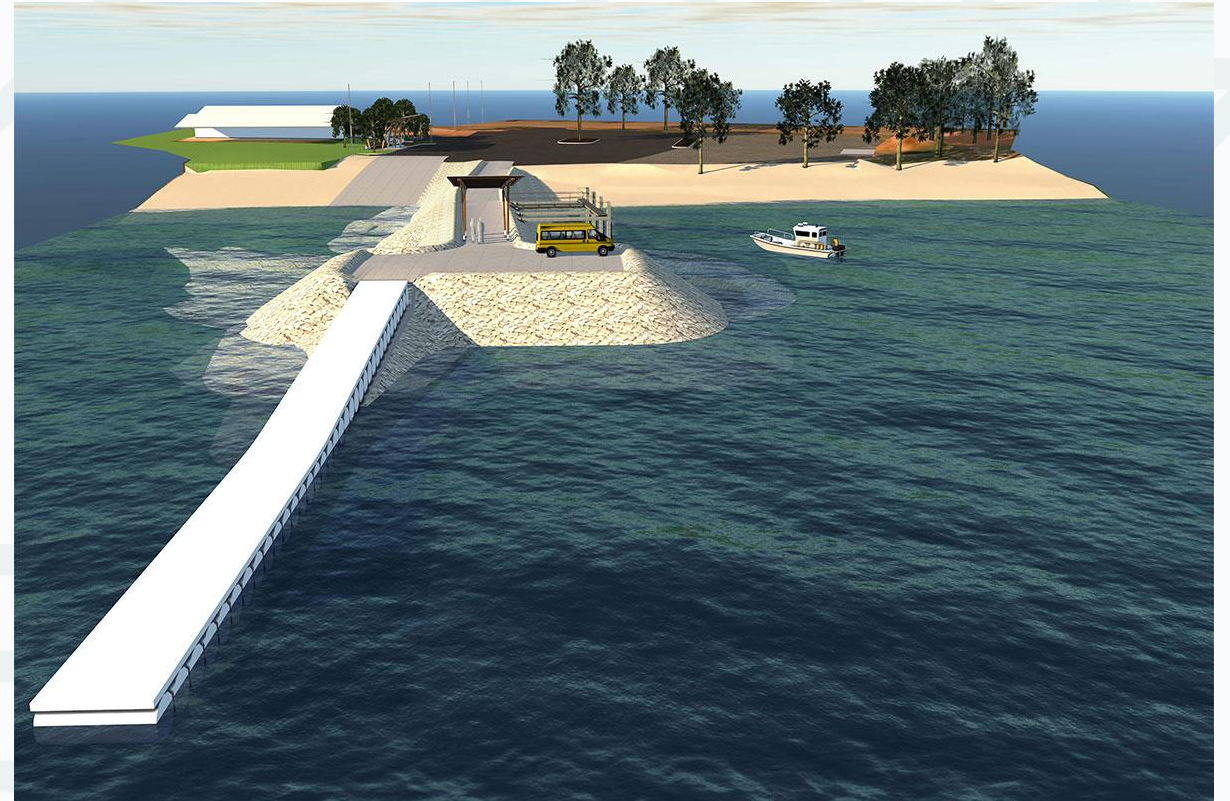


Gunyanjara (Gove Port) Tourism Precinct

The third and final package of works has commenced for the \$9.3M Gunyanjara (Gove Port) Tourism Precinct.

Project Update

- Improve marine tourism infrastructure:
 - New extended rock groyne for vehicles and pedestrians
 - Careening facilities that vessels can dock alongside for maintenance
 - Floating pontoon
 - Wash-down bay
 - Car park upgrades
 - Entry structure
- Anticipated completion by August 2025.



Getting information

- The Reference Group invites attendees to visit Gove Futures website for further information or to submit any questions or feedback – govefutures.nt.gov.au

